

# STANDARD DETAILS FOR



**WildeWood**

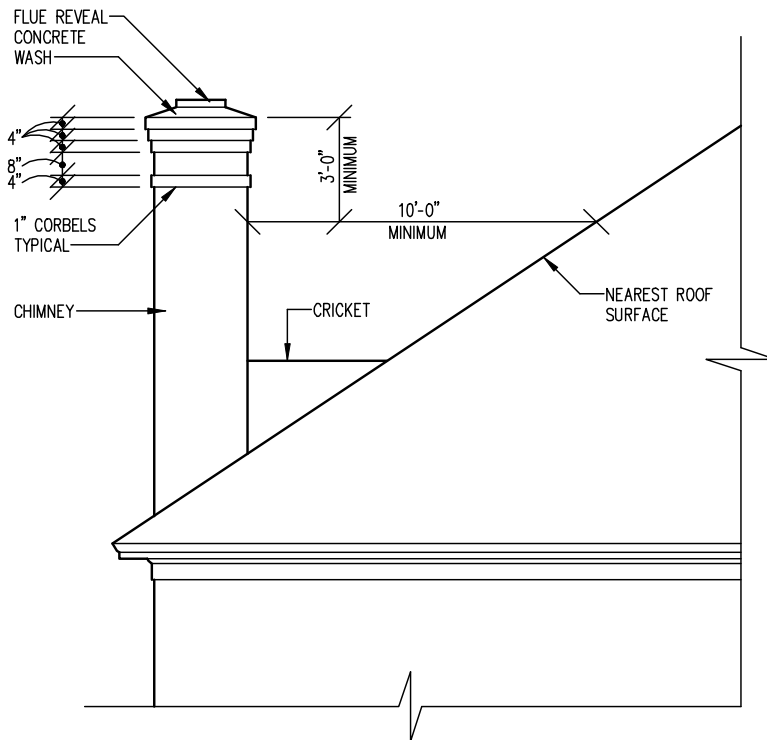
**Typical scale for submitted drawings:**

Site Plan..... 1" = 20'-0"

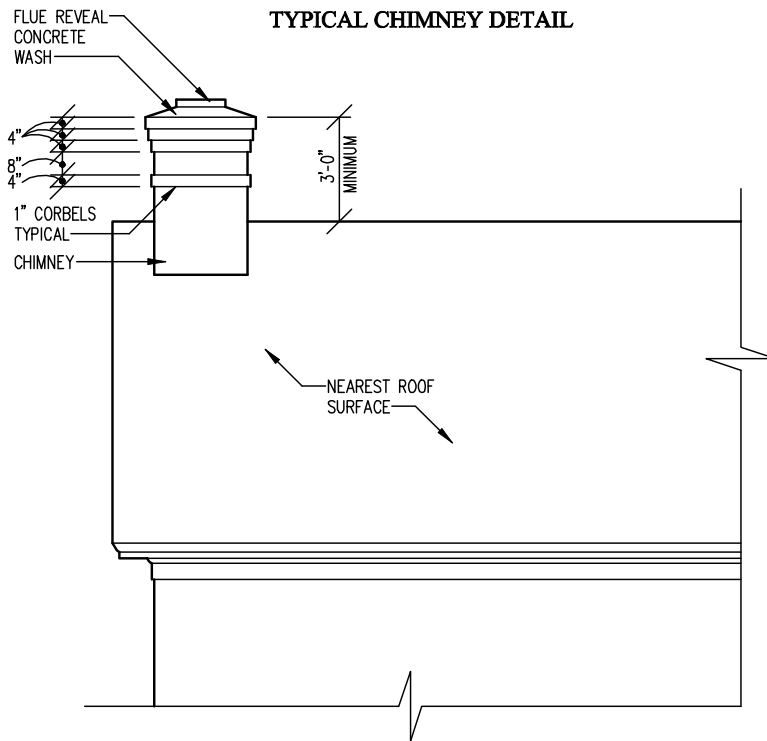
Foundation, Floor plans, Framing Plans, Elevations, Electricals..... 1/4" = 1'-0"

Sections and Details ..... 3/4" = 1'-0"

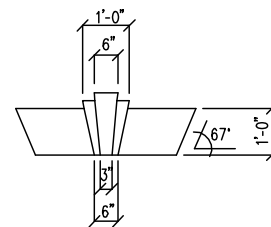
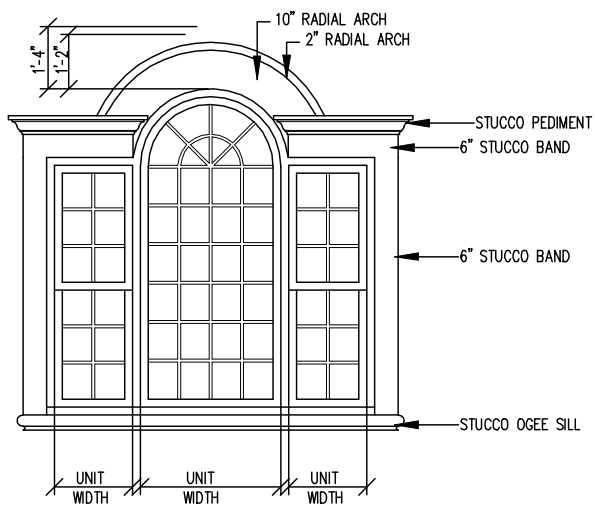
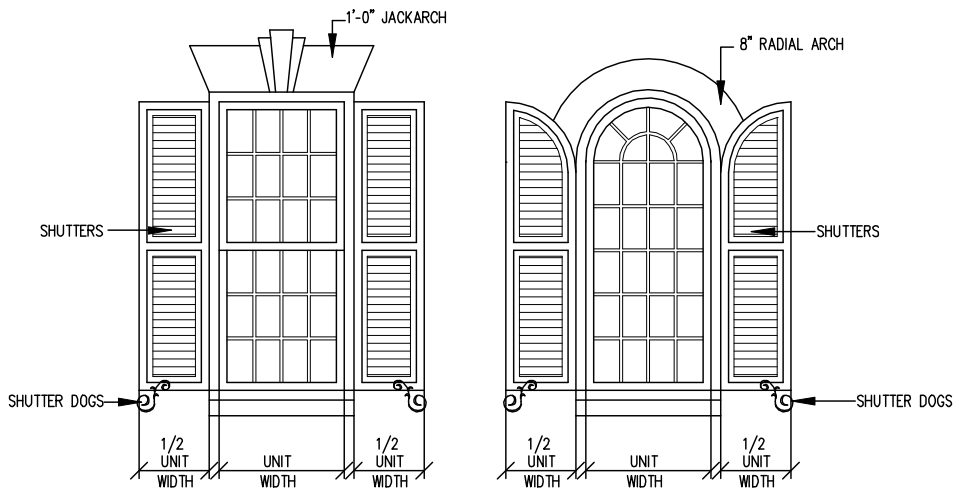
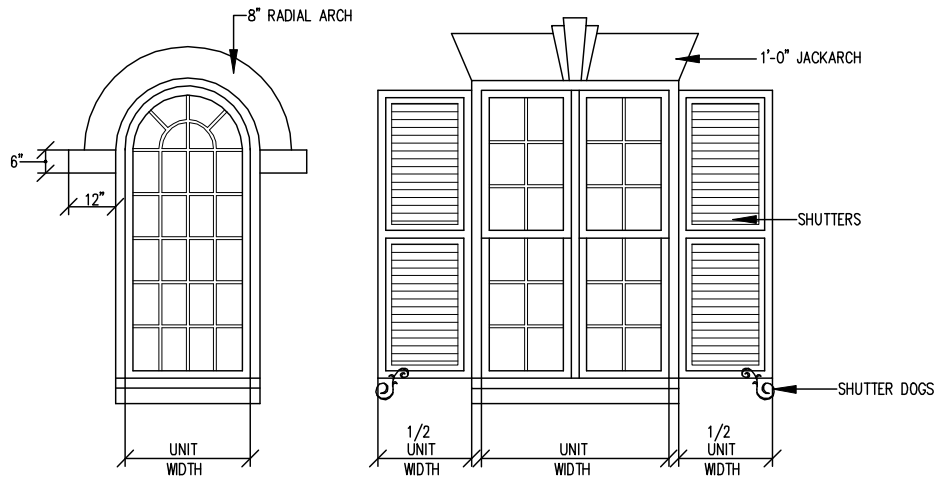
Interior Elevations..... 3/8" = 1'-0"



**TYPICAL CHIMNEY DETAIL**



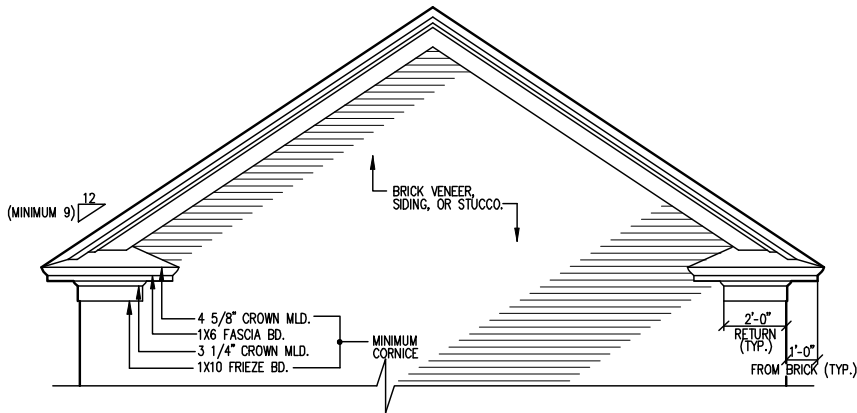
**TYPICAL CHIMNEY DETAIL**



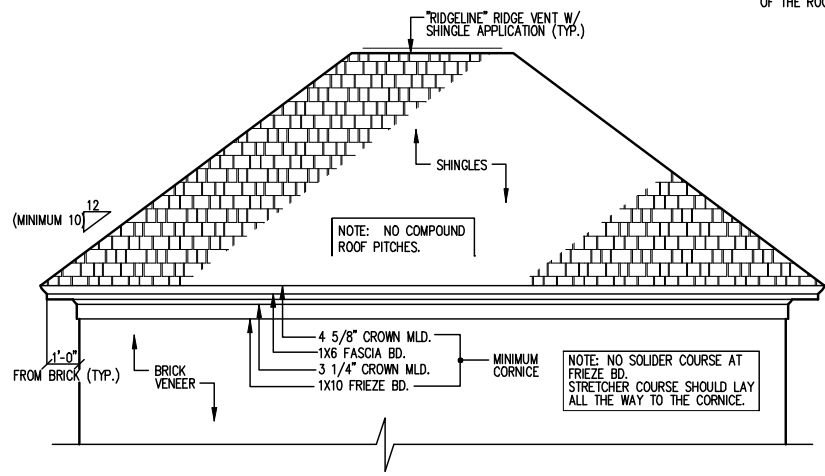
**JACKARCH AND KEY DETAIL**

- NOTES:
1. NO SHUTTERS ON TRIPLE WINDOW UNITS.
  2. IF THE WINDOW HAS STUCCO BANDS DOWN THE SIDE, THE SILL MUST BE STUCCO AS WELL.

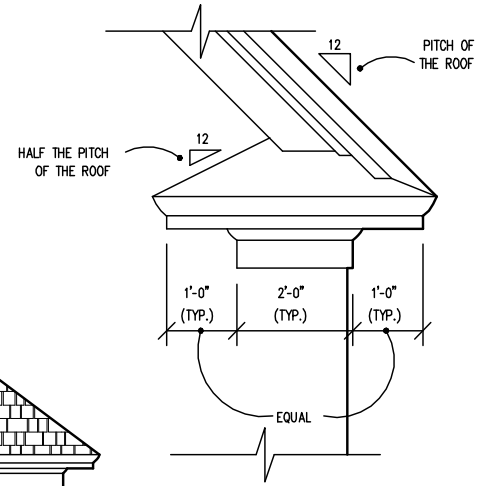
**WINDOW DETAILS**



**DETAIL AT GABLE ROOF  
(PITCH, CORNICE, OVERHANG, ETC.)**

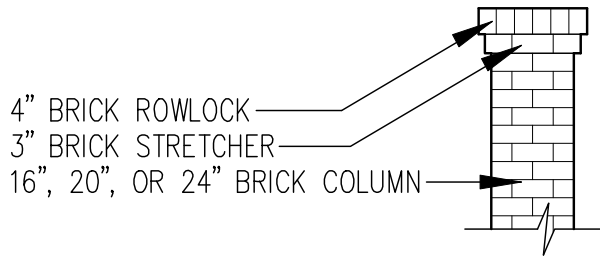
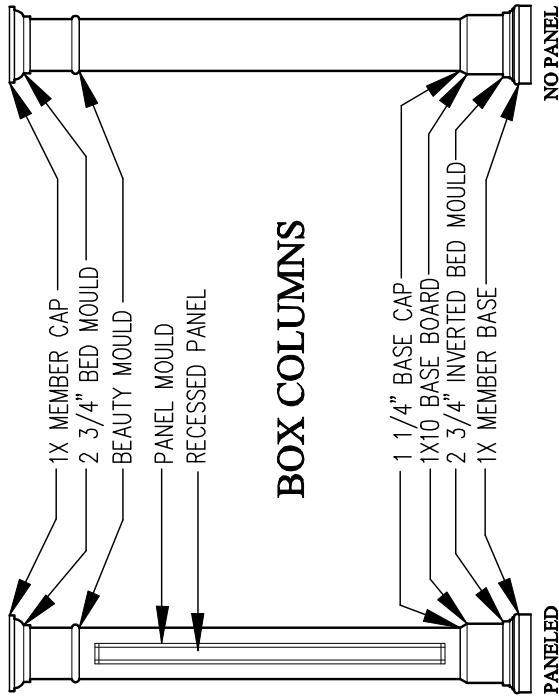
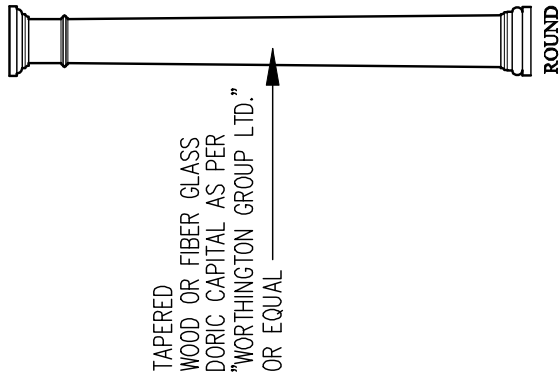


**DETAIL AT HIP ROOF  
(PITCH, CORNICE, OVERHANG, ETC.)**



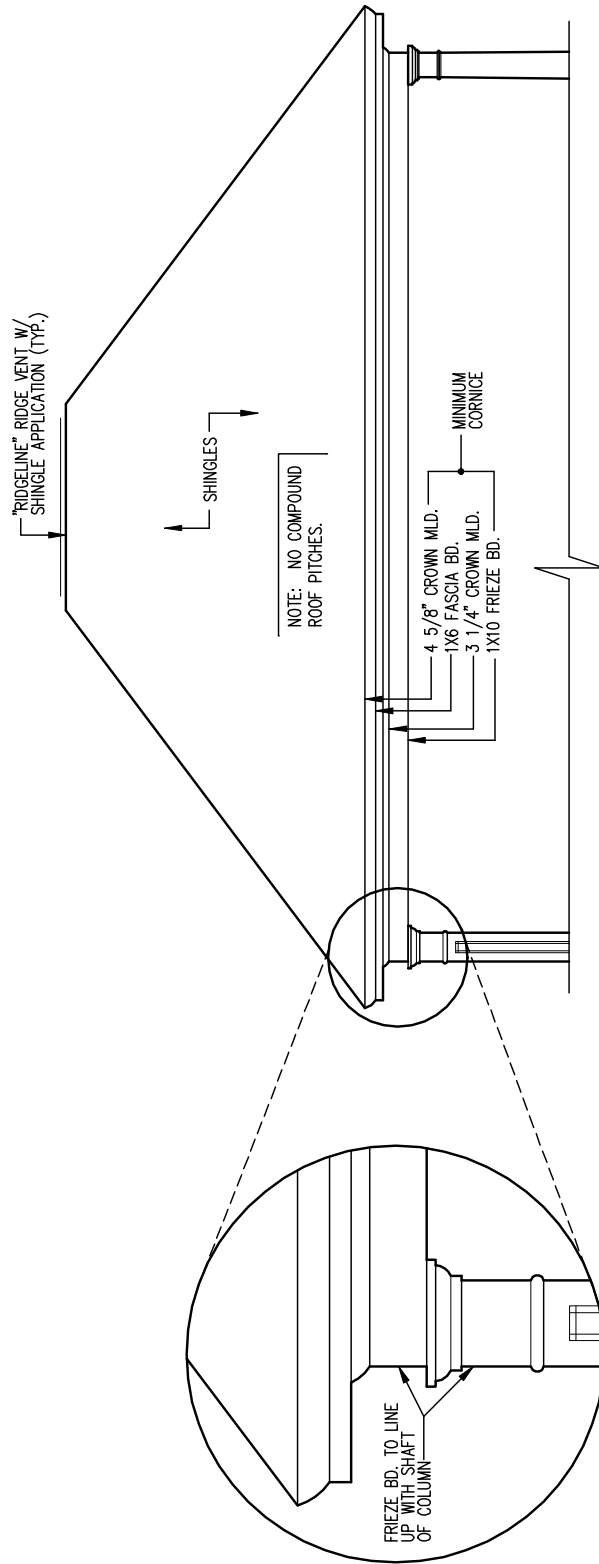
**TYPICAL RETURN DETAIL**

COLUMN DIAMETERS SHOULD BE PROPORTIONAL TO THEIR HEIGHT. THE DIAMETER SHOULD BE SPECIFIED ON THE PLANS. THE ARB SHALL DETERMINE APPROPRIATE DIAMETERS.

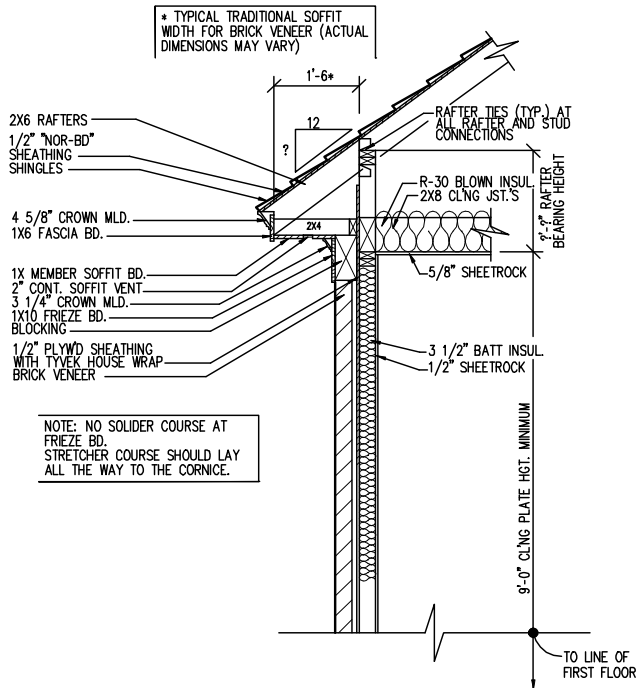


### TYPICAL BRICK COLUMN

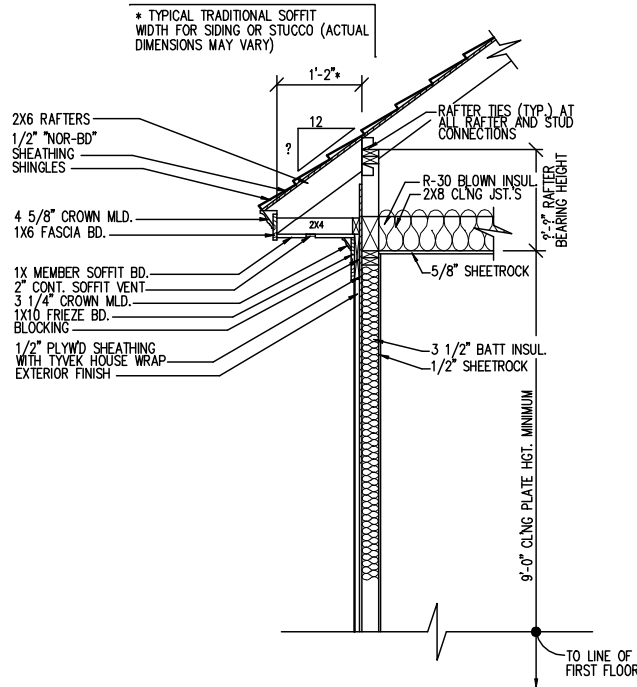
## COLUMN DETAILS



**COLUMN DETAIL AT PORCH  
(COLUMN/ BEAM RELATIONSHIP)**



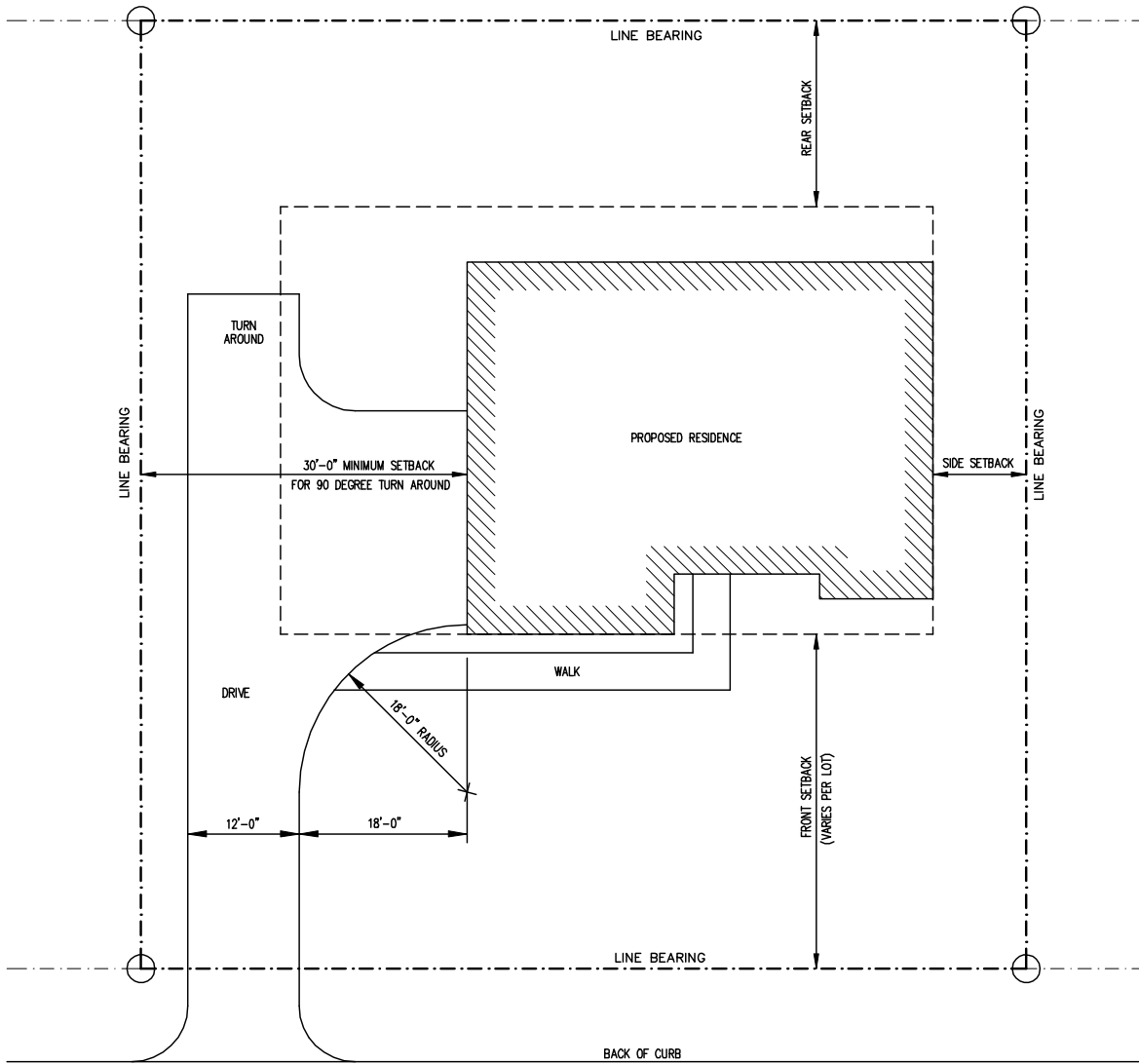
**INFORMATION NEEDED ON BRICK WALL SECTION TYPICAL**



**INFORMATION NEEDED ON STUCCO OR SIDING WALL SECTION TYPICAL**



LOT #



STREET NAME

# TYPICAL SITE PLAN