

STANDARD DETAILS

FOR

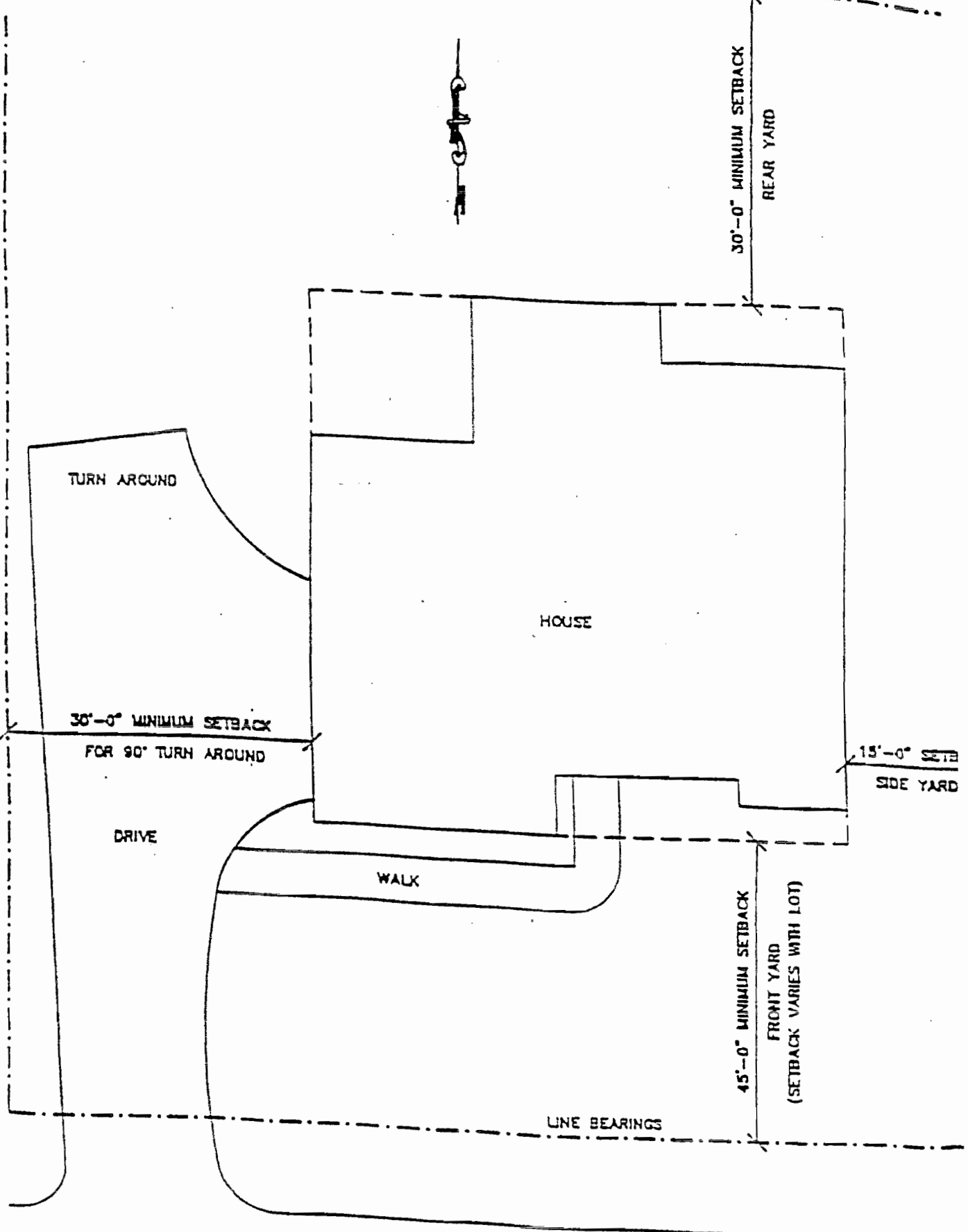
THE PENINSULA

AT

TIMBERLAKE

TYPICAL SCALE FOR DRAWINGS
SITE PLAN
FOUNDATION, FLOOR PLANS, FRAMING, ELEVATIONS, ELECTRICAL
SECTIONS AND DETAILS
INTERIOR ELEVATIONS

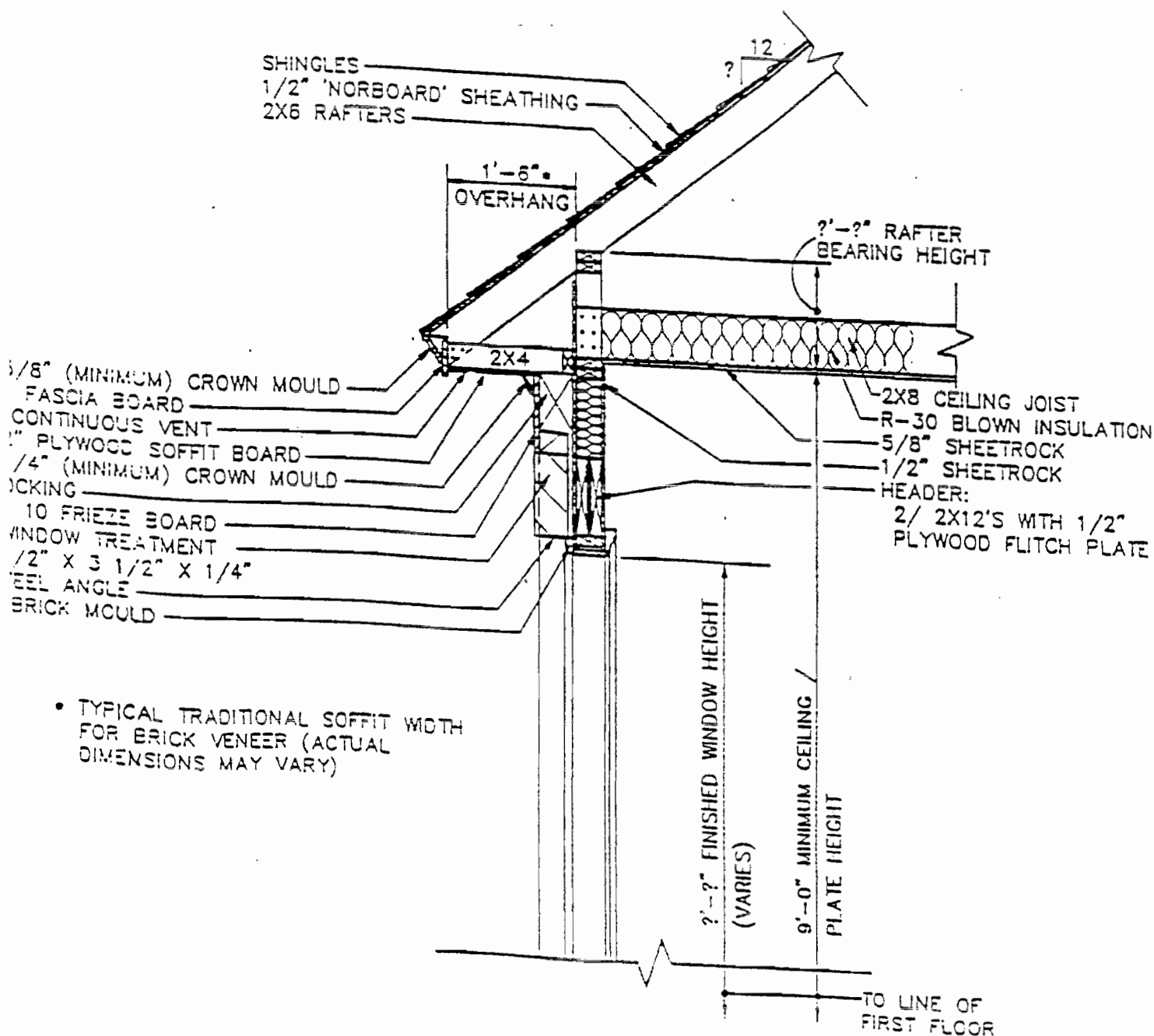
1" = 20'-0"
1/4" = 1'-0"
3/4" = 1'-0"
3/8" = 1'-0"



STREET NAME

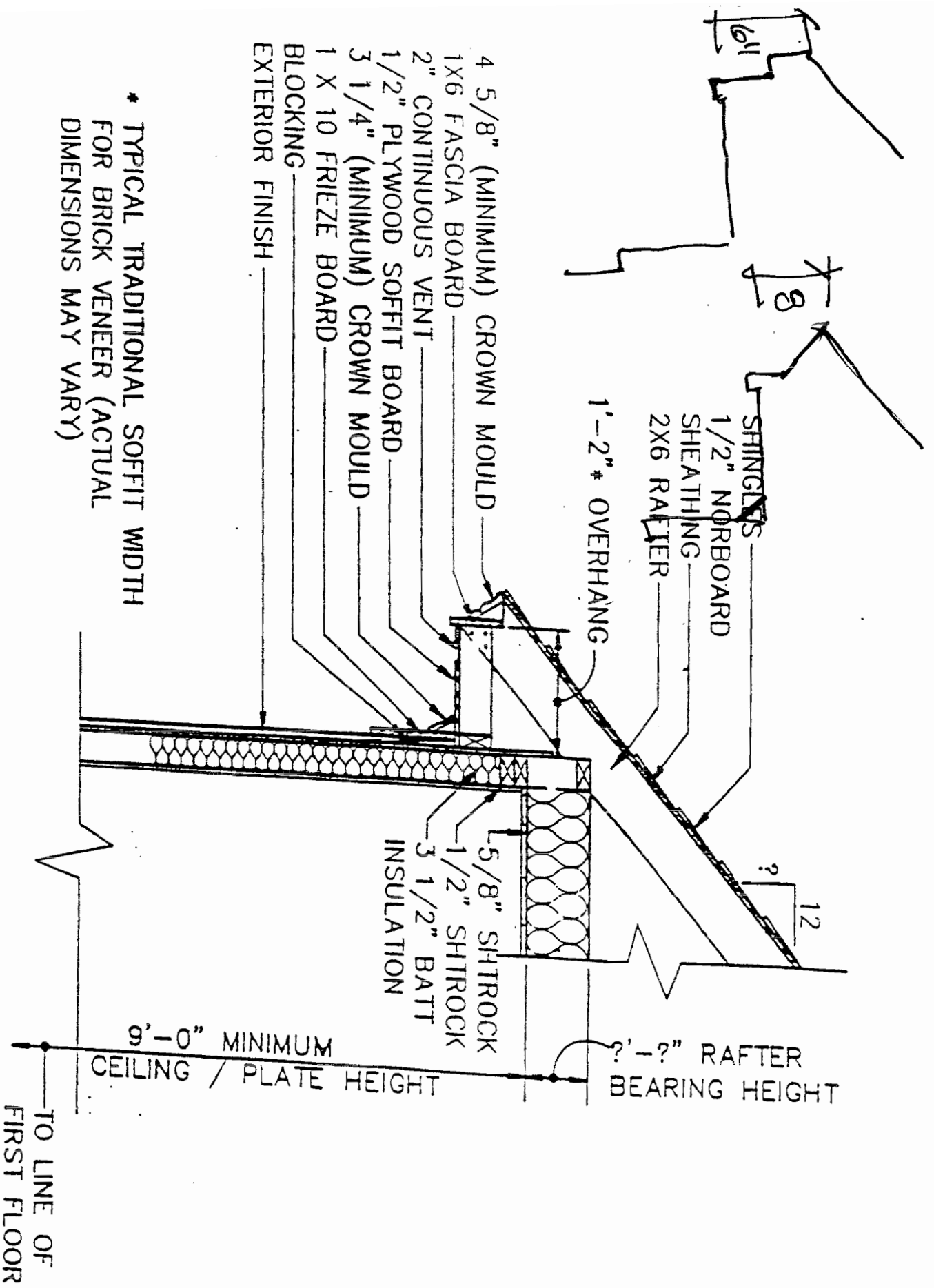
or

INFORMATION NEEDED ON SITE PLAN



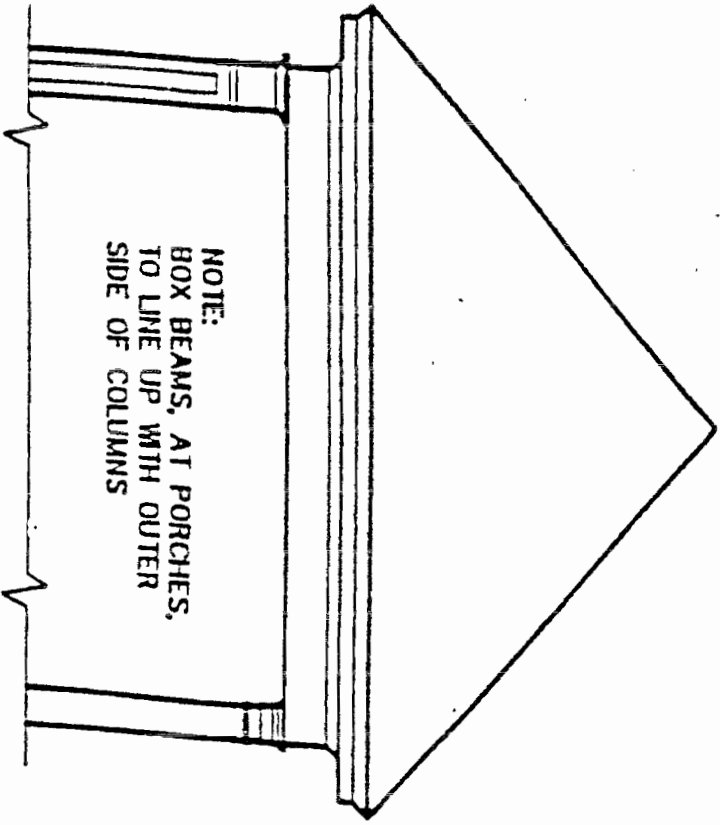
• TYPICAL TRADITIONAL SOFFIT WIDTH FOR BRICK VENEER (ACTUAL DIMENSIONS MAY VARY)

INFORMATION NEEDED ON BRICK WALL SECTION



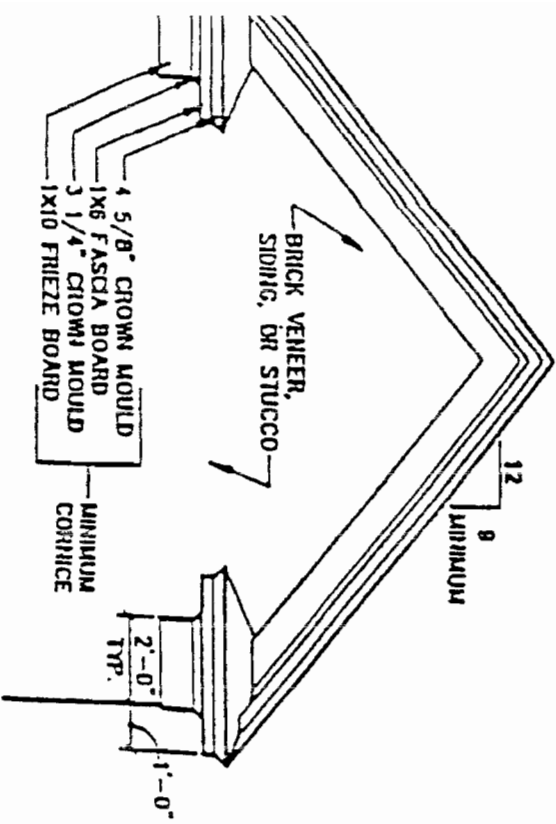
* TYPICAL TRADITIONAL SOFFIT WIDTH FOR BRICK VENEER (ACTUAL DIMENSIONS MAY VARY)

INFORMATION NEEDED ON SIDING OR STUCCO WALL SECTION

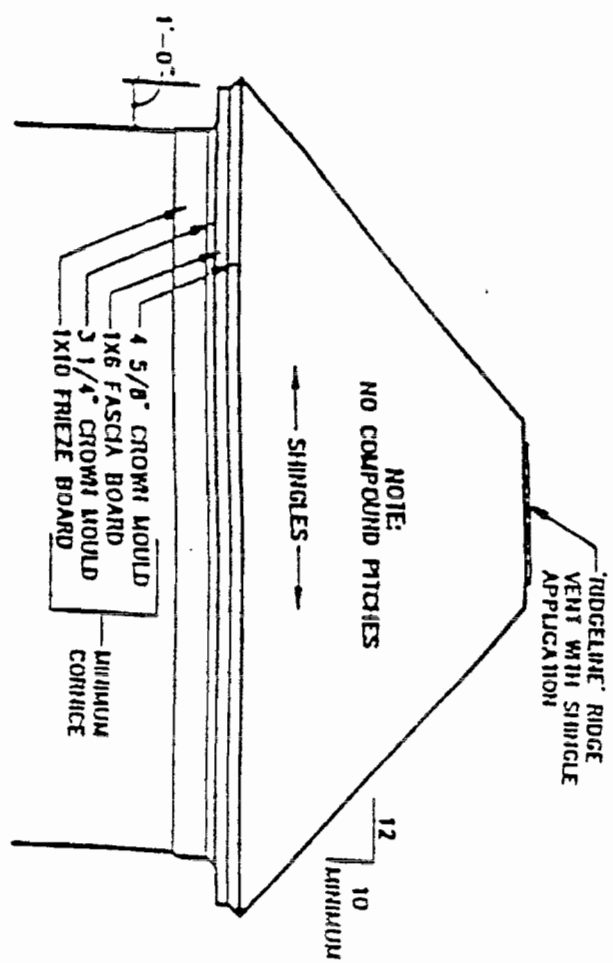


NOTE:
BOX BEAMS, AT PORCHES,
TO LINE UP WITH OUTER
SIDE OF COLUMNS

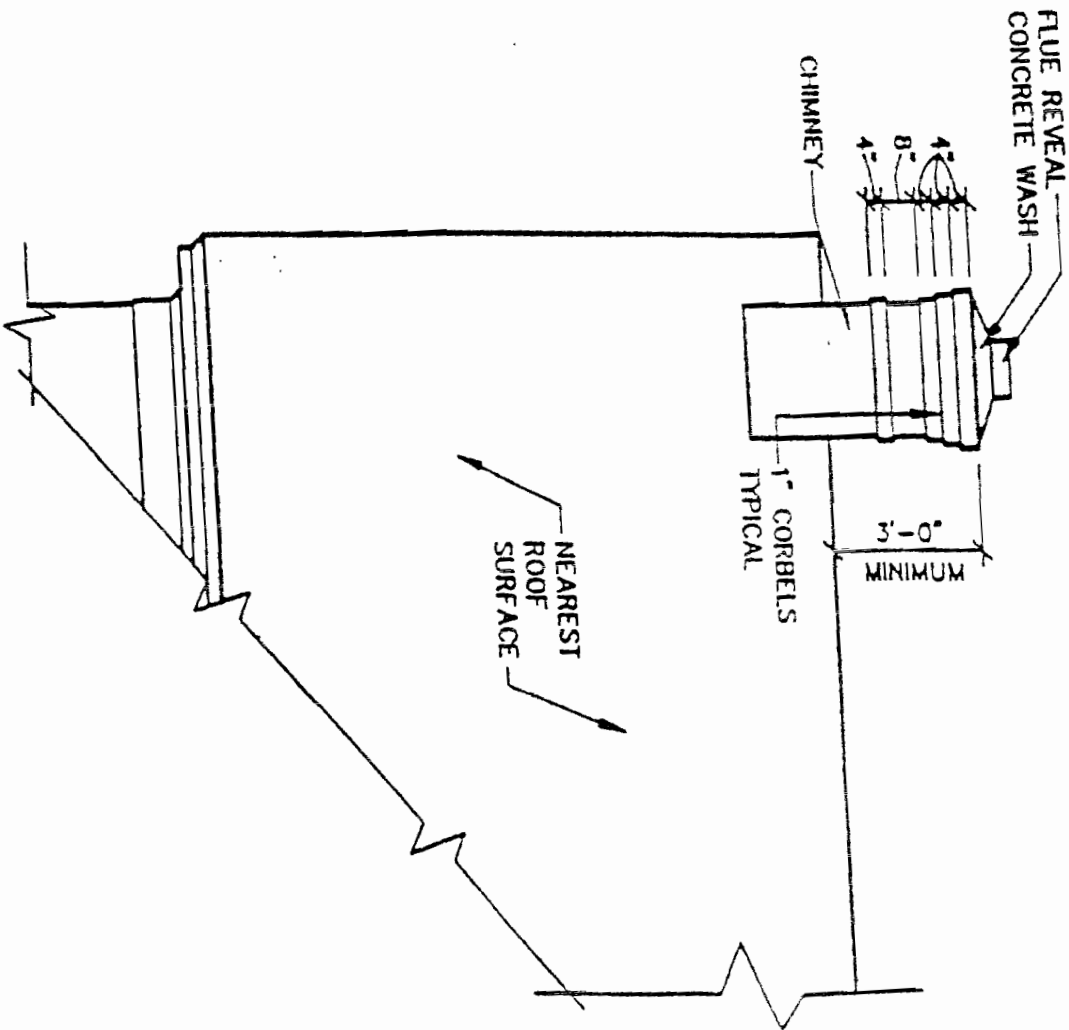
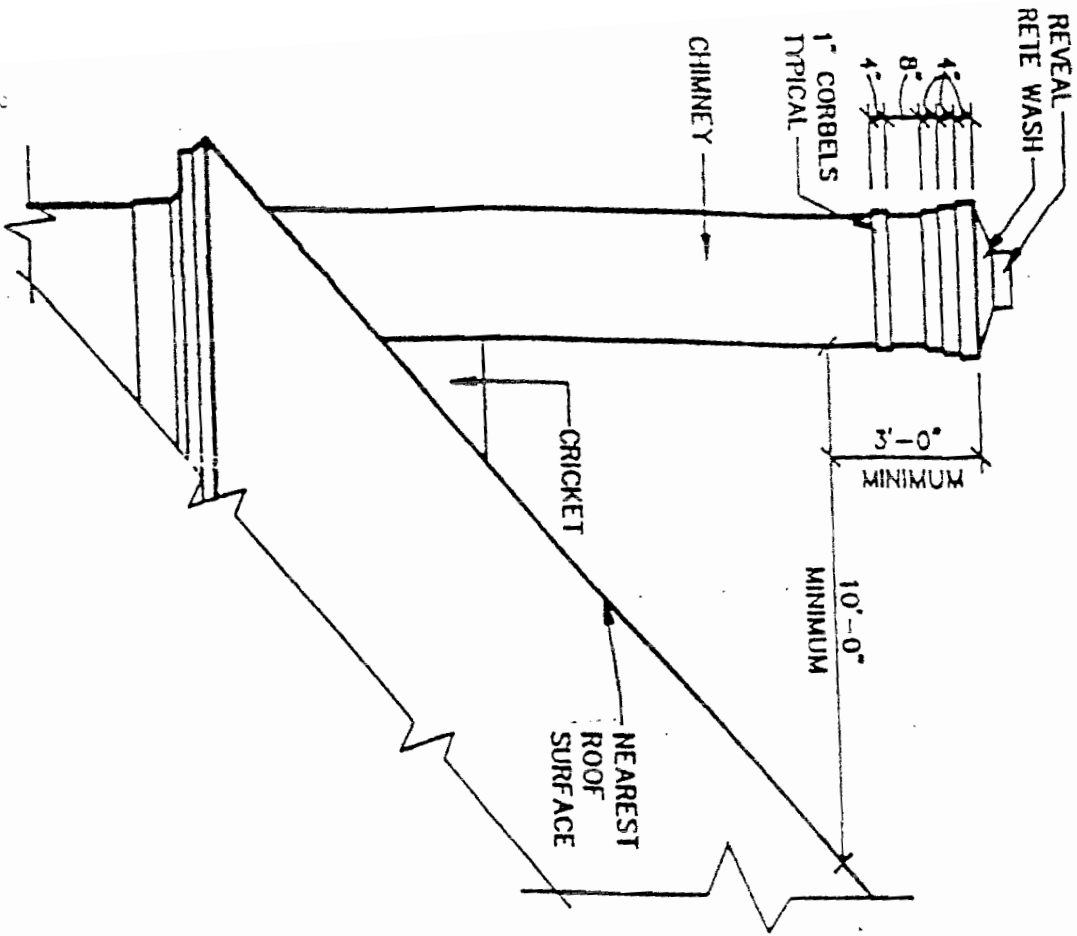
COLUMN DETAIL AT PORCH
(COLUMN / BEAM RELATIONSHIP)

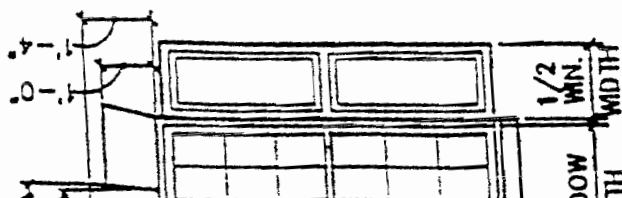
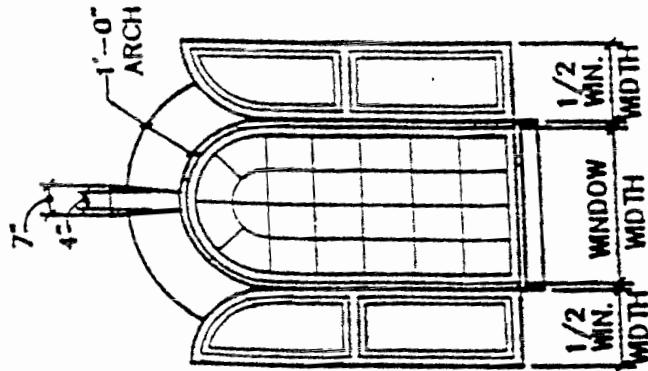
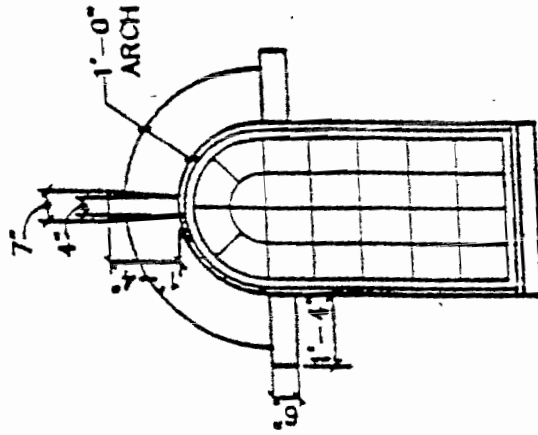
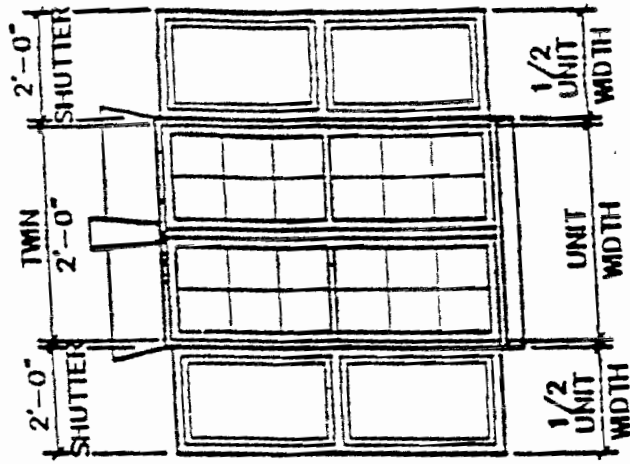


DETAIL AT GABLE ROOF
(PITCH, CORNICE, OVERHANG, ETC.)



DETAIL AT HIP ROOF
(PITCH, CORNICE, OVERHANG, ETC.)

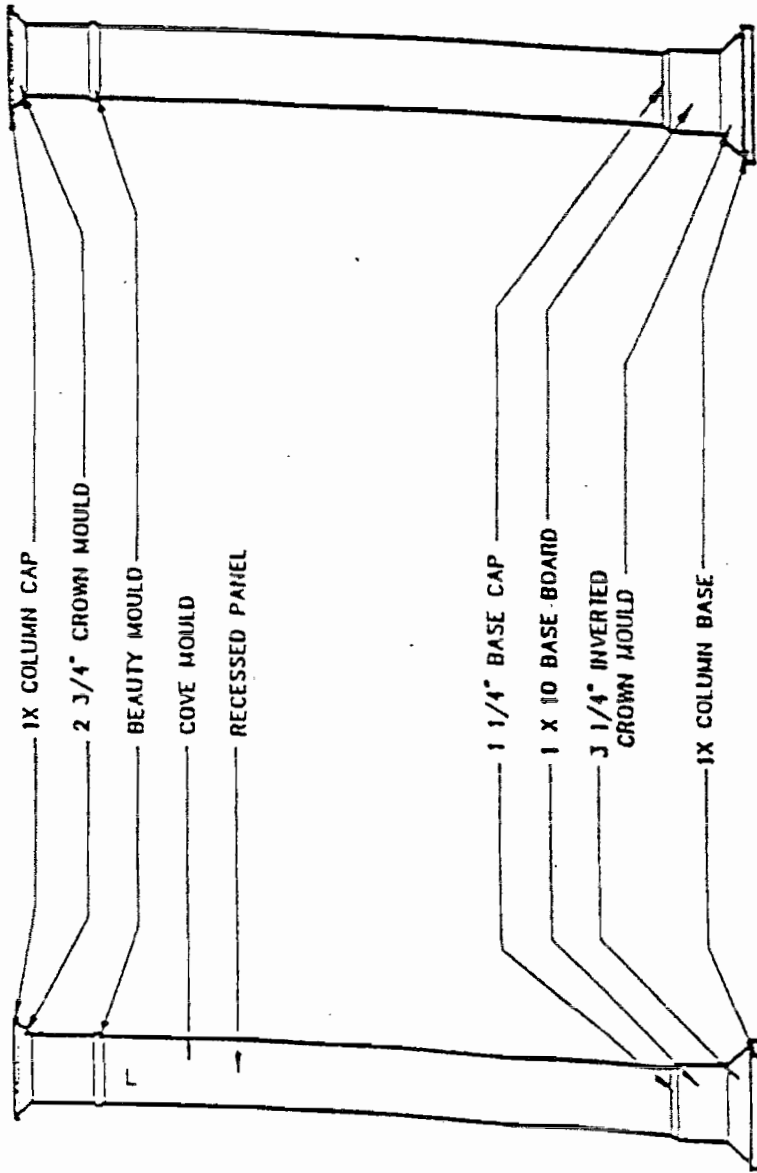




JACKARCH / SHUTTER DETAILS

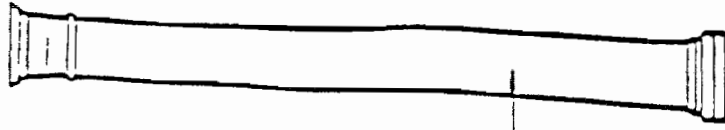
NOTE:

NO SHUTTERS ON TRIPLE WINDOW UNITS



PANELED

BOX



10" DIAMETER
 TAPERED WOOD
 COLUMN WITH
 DORIC CAPITAL
 AS PER
 'WORKINGTON
 GROUP LTD.'
 OR EQUAL

ROUND

COLUMN DETAILS