

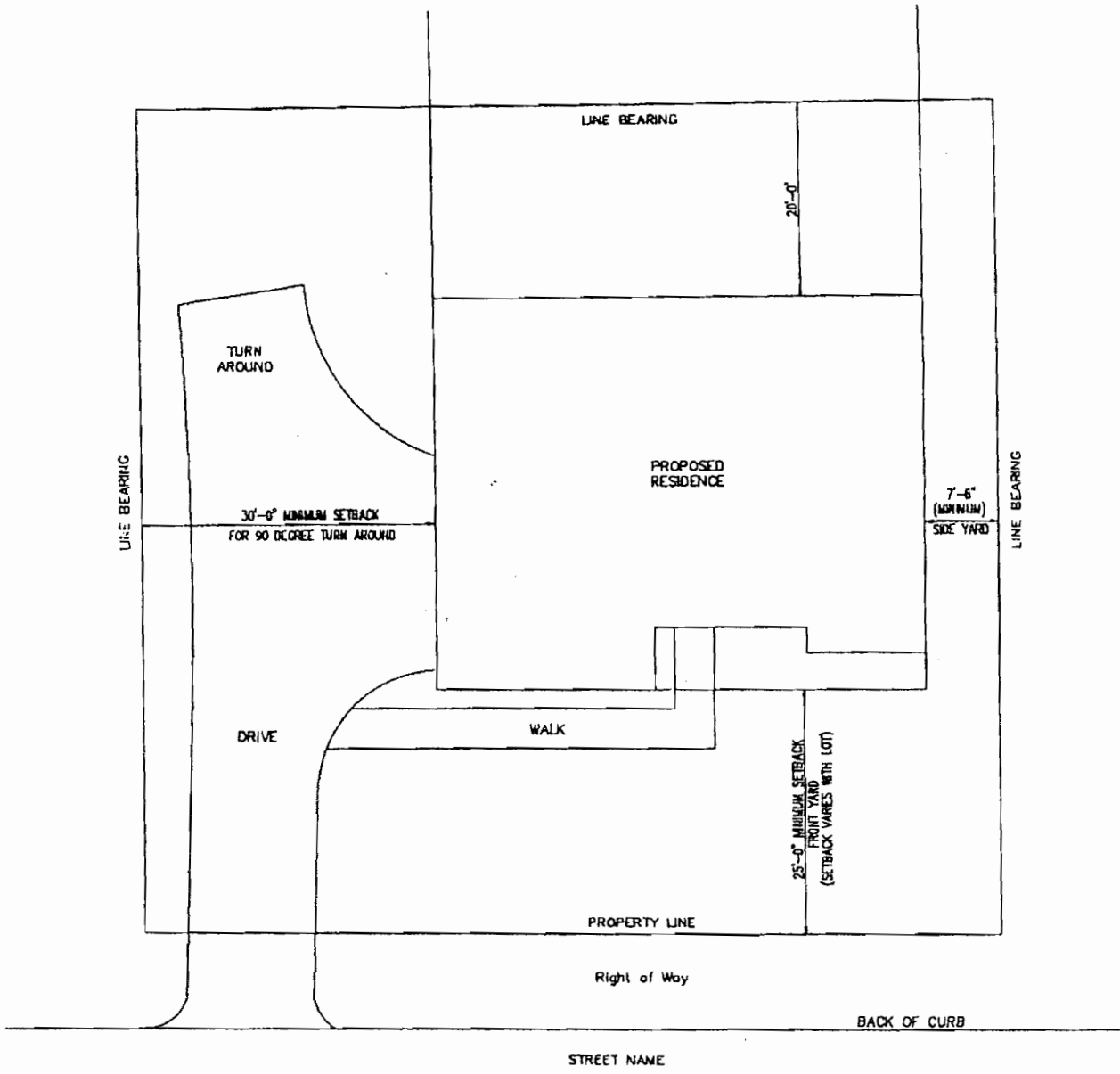
# BEACON'S POINT

---

## STANDARD DETAILS

**TYPICAL SCALE FOR DRAWINGS**  
**SITE PLAN**  
**FOUNDATION, FLOOR PLANS, FRAMING, ELEVATIONS, ELECTRICAL**  
**SECTIONS AND DETAILS**  
**INTERIOR ELEVATIONS**

**1" = 20'-0"**  
**1/4" = 1'-0"**  
**3/4" = 1'-0"**  
**3/8" = 1'-0"**



*SITE PLAN WITH  
 MINIMUM SETBACKS  
 NO SCALE*

—RIDGE LINE' RIDGE VENT WITH SHINGLE APPLICATION ( TYPICAL )

9  
MINIMUM  
12

NOTE: COMPOUND ROOFS ALLOWED;  
MAXIMUM OF TWO DIFFERENT ROOF  
PITCHES ALLOWED

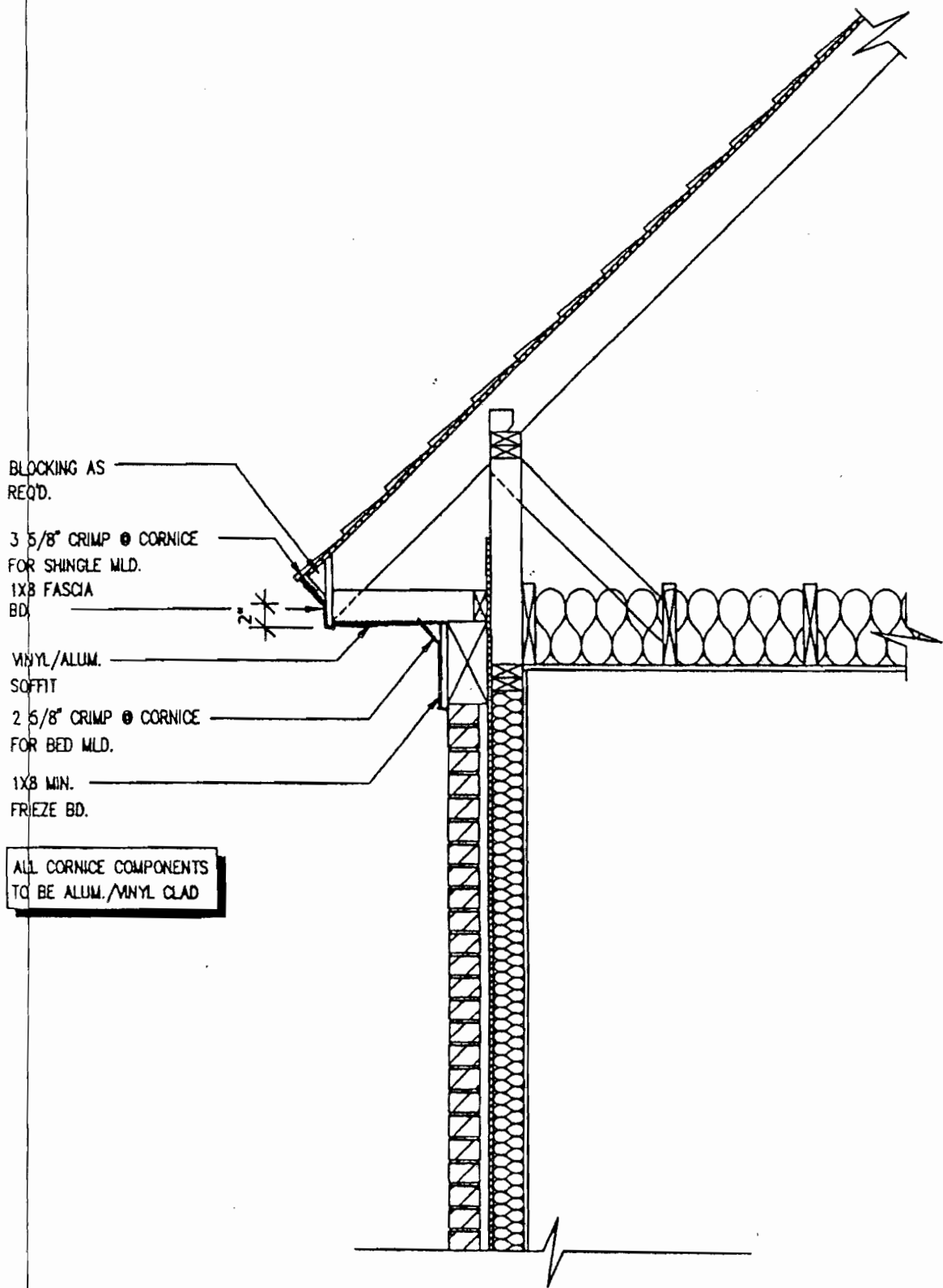
—SHINGLES—

1'-0"

3 5/8" CROWN MLD.  
1X6 FRIEZE BD.  
3 5/8" CROWN MLD.  
1X10 FRIEZE BD.

MINIMUM  
CORNICE

DETAIL AT HIP ROOF  
(PITCH, CORNICE, OVERHANG, ETC.)



BLOCKING AS  
REQ'D.

3 5/8" CRIMP @ CORNICE  
FOR SHINGLE MLD.  
1X8 FASCIA  
BD.

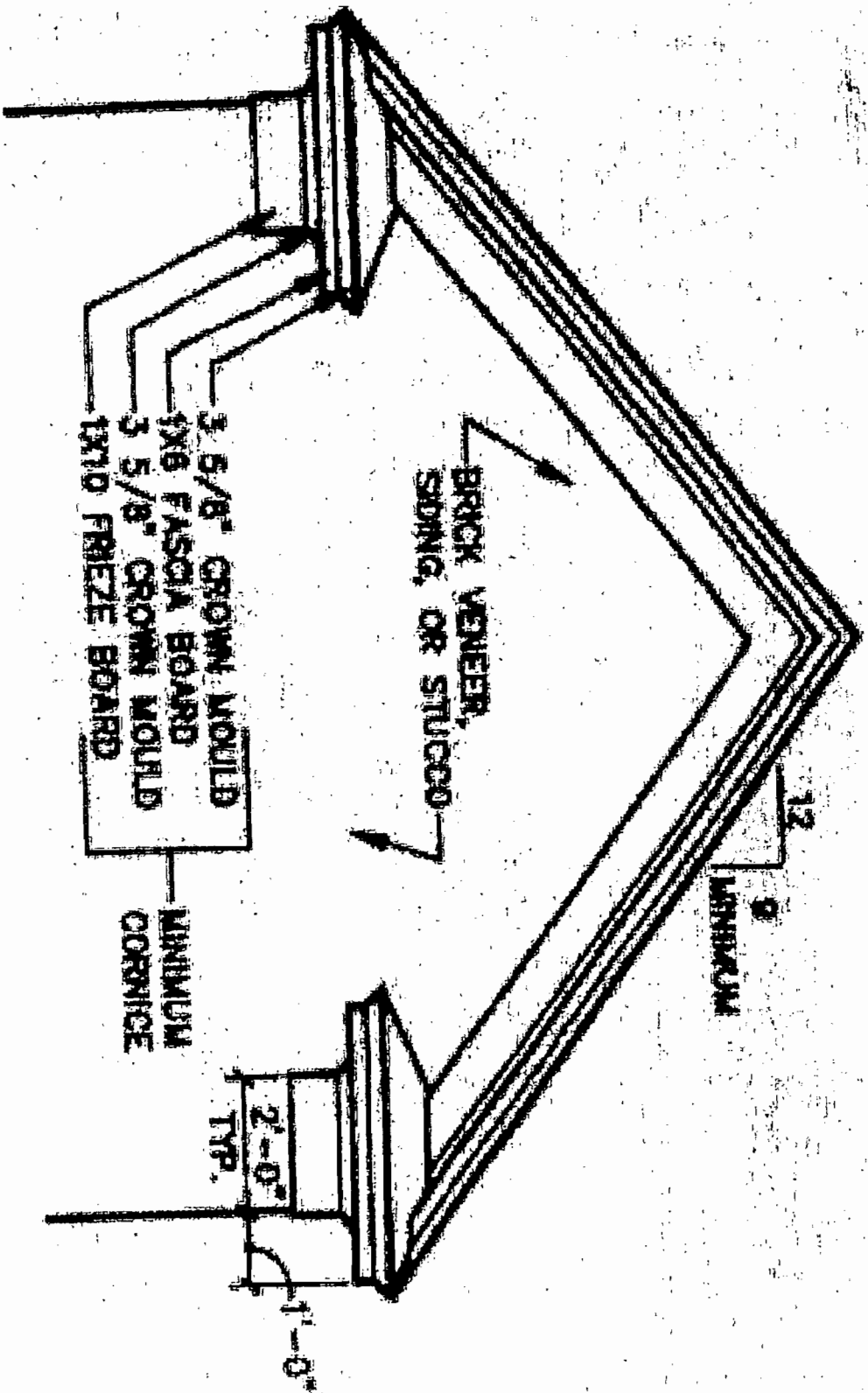
VINYL/ALUM.  
SOFFIT

2 5/8" CRIMP @ CORNICE  
FOR BED MLD.

1X8 MIN.  
FRIEZE BD.

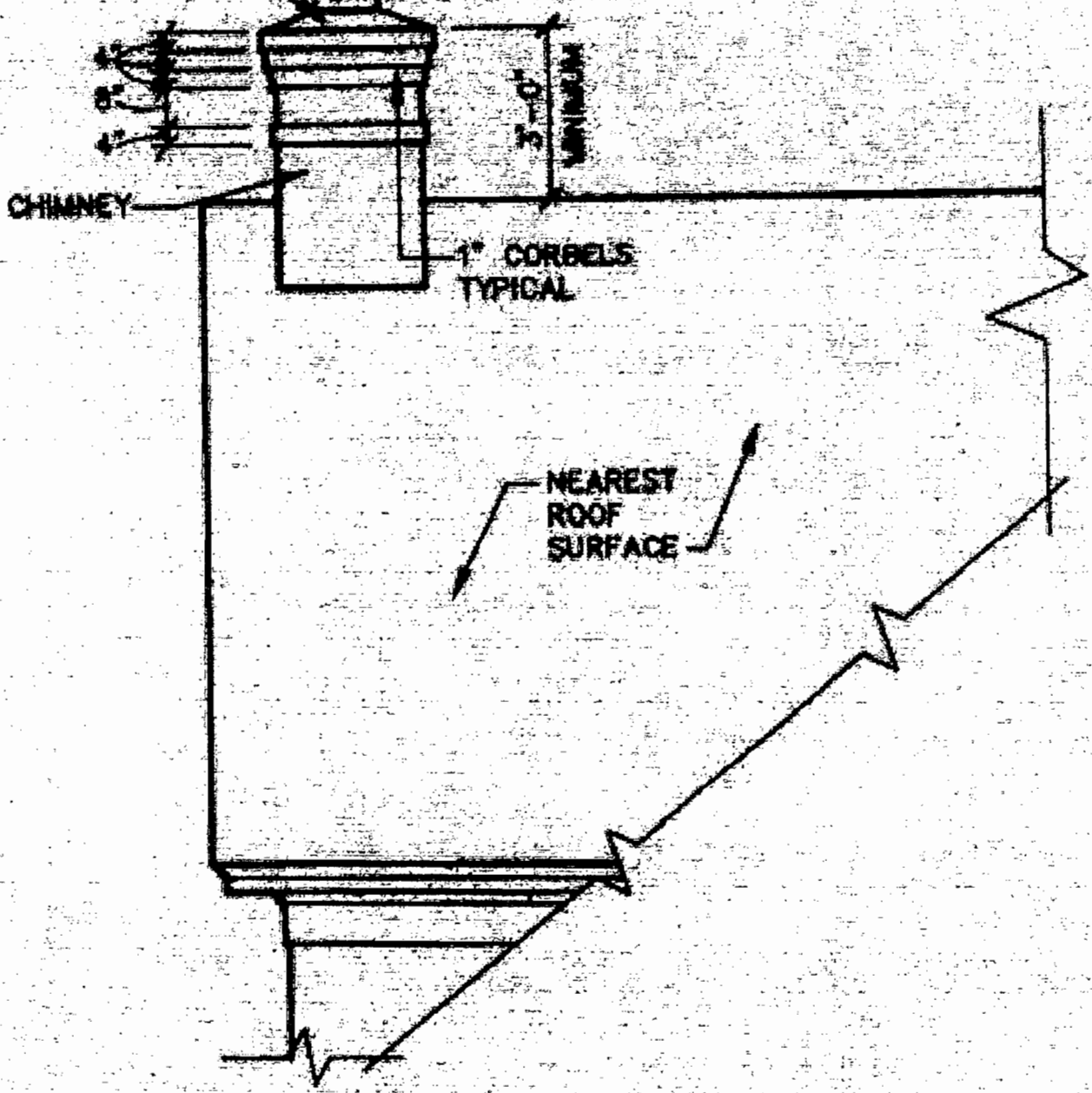
ALL CORNICE COMPONENTS  
TO BE ALUM./VINYL CLAD

# VINYL/ALUMINUM CORNICE DETAIL



**DETAIL AT GABLE ROOF**  
 (PITCH, CORNICE, OVERHANG, ETC.)

FLUE REVEAL  
CONCRETE WASH



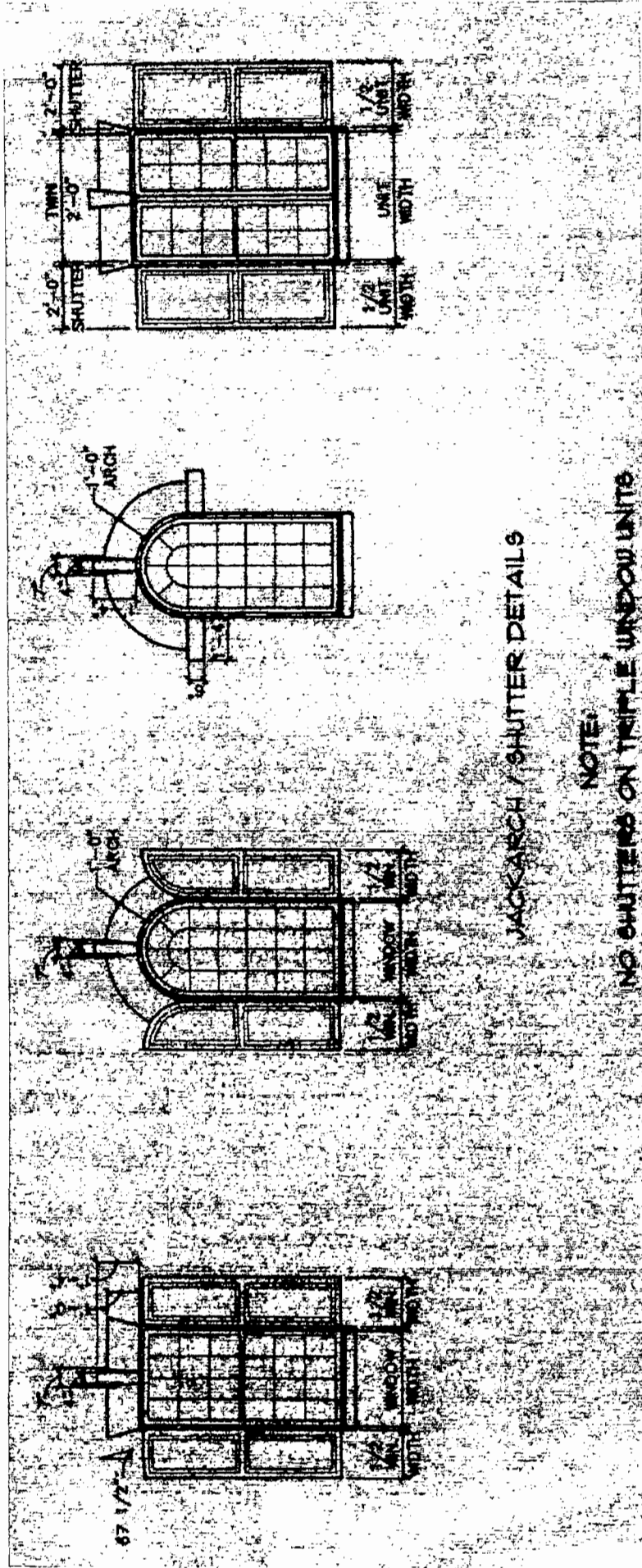
CHIMNEY DETAIL AT GABLE ROOF



NOTE:  
BOX BEAMS AT PORCHES,  
TO LINE UP WITH OUTER  
SIDE OF COLUMNS

COLUMN DETAIL AT PORCH  
(COLUMN / BEAM RELATIONSHIP)

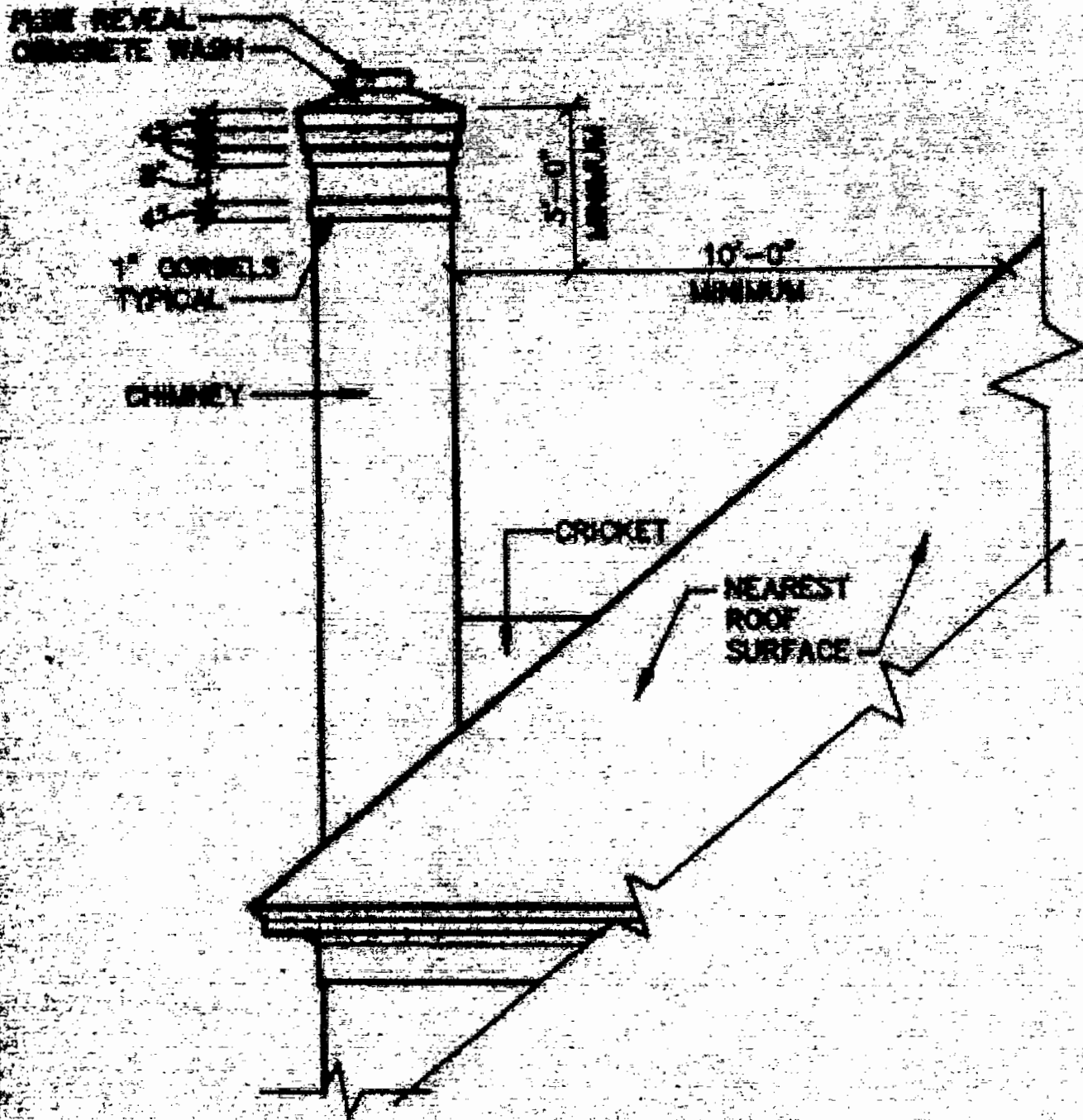




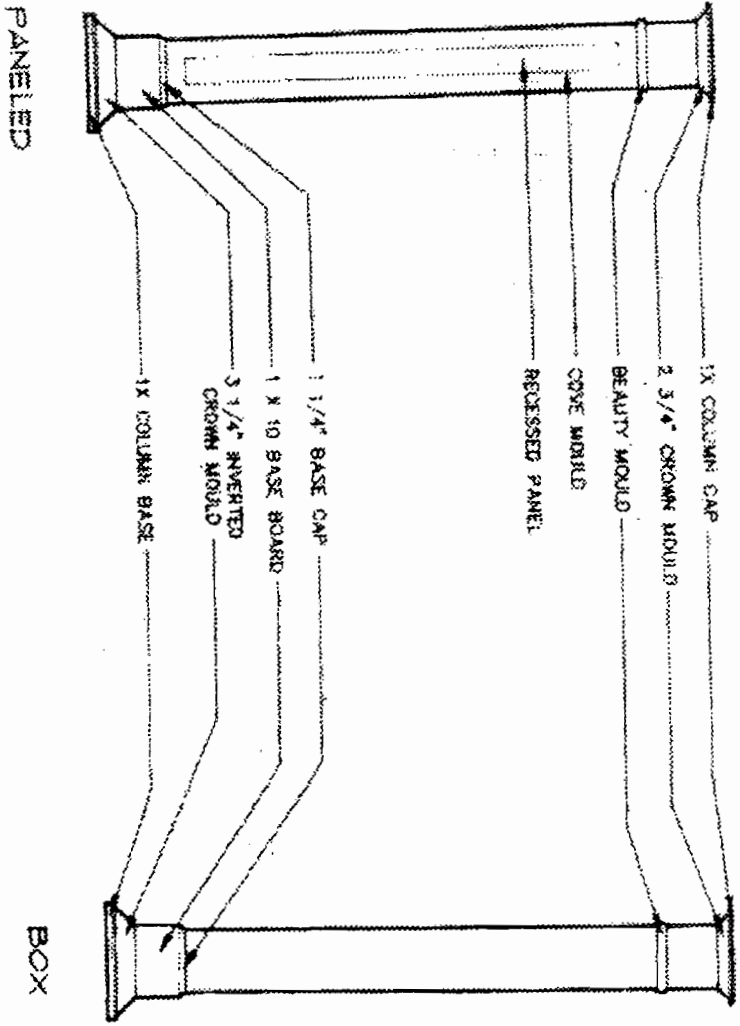
JACKARCH / SHUTTER DETAILS

NOTE:  
NO SHUTTERS ON TRIMBLE WINDOW UNITS

67 1/2"



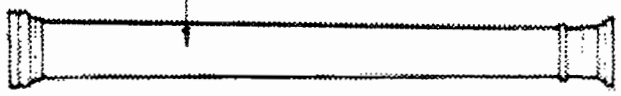
CHIMNEY DETAIL AT HIP ROOF



PANELED

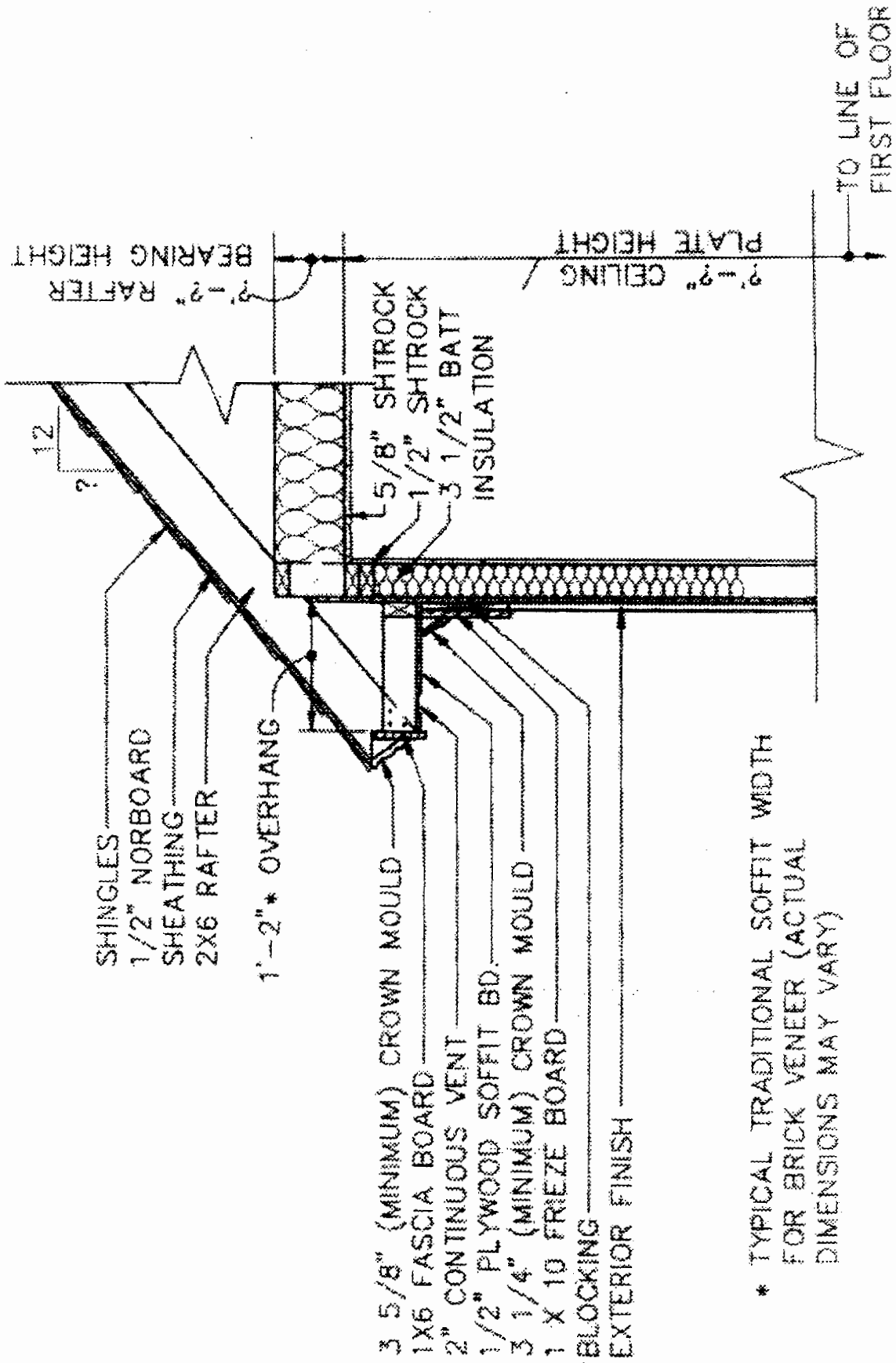
BOX

COLUMN DETAILS



ROUND

10" DIAMETER  
 TAPERED WOOD  
 COLUMN WITH  
 DORIC CAPITAL  
 AS PER  
 WASHINGTON  
 GROUP LTD.  
 OR EQUAL



\* TYPICAL TRADITIONAL SOFFIT WIDTH FOR BRICK VENEER (ACTUAL DIMENSIONS MAY VARY)