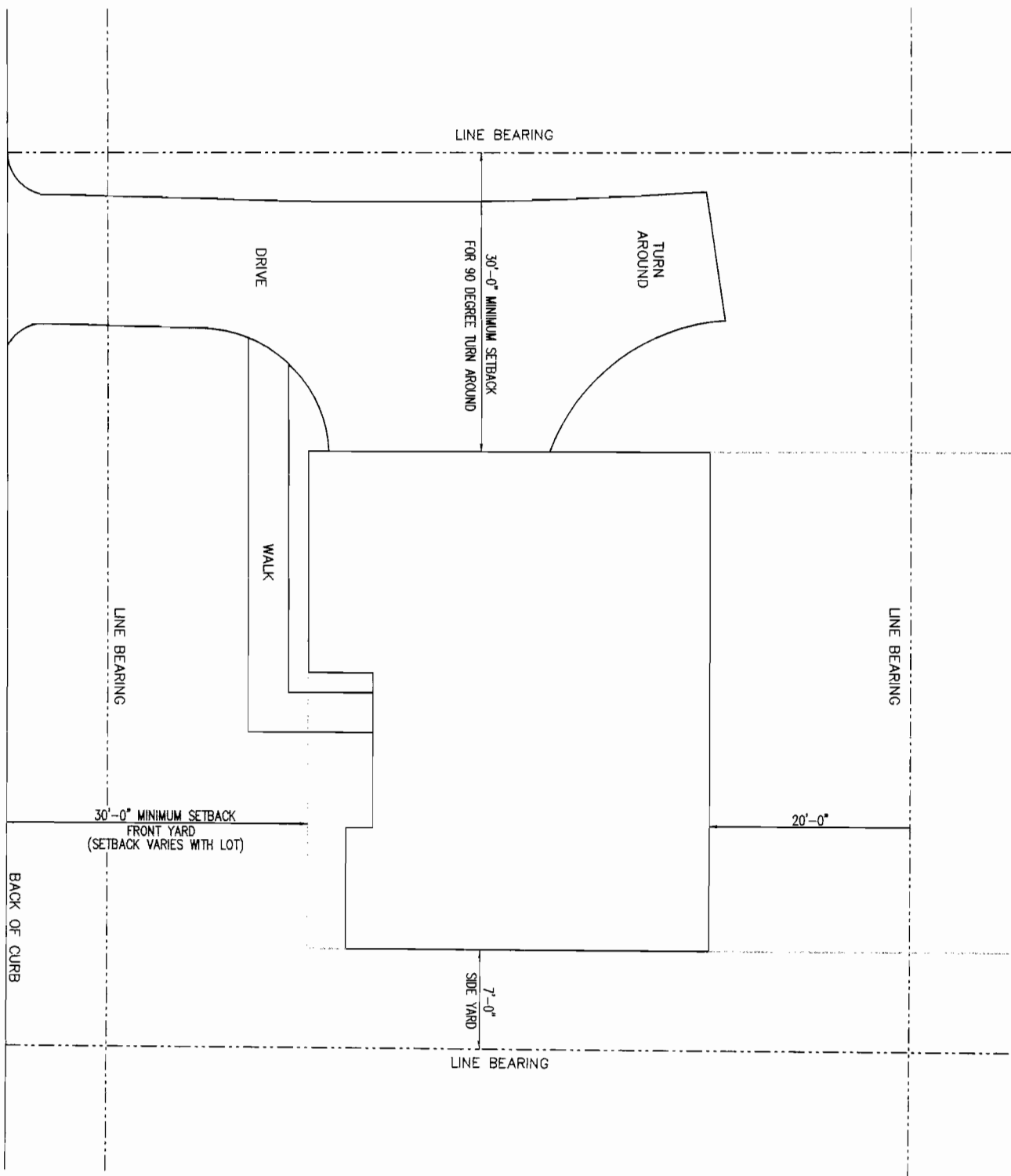




## *STANDARD DETAILS*

The Standard Details are for illustration purposes only. Plans conforming to the Standard Details must still be approved by the ARO and the ARO may approve or disapprove any plans.



STREET NAME

LINE BEARING

DRIVE

TURN  
AROUND

30'-0" MINIMUM SETBACK  
FOR 90 DEGREE TURN AROUND

WALK

LINE BEARING

LINE BEARING

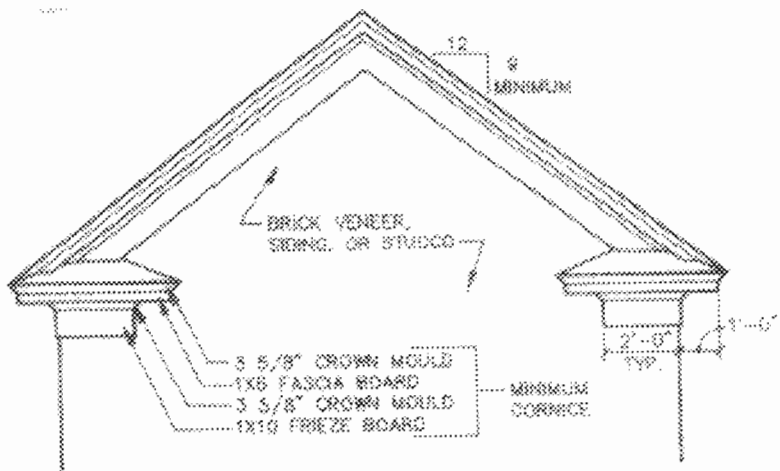
30'-0" MINIMUM SETBACK  
FRONT YARD  
(SETBACK VARIES WITH LOT)

20'-0"

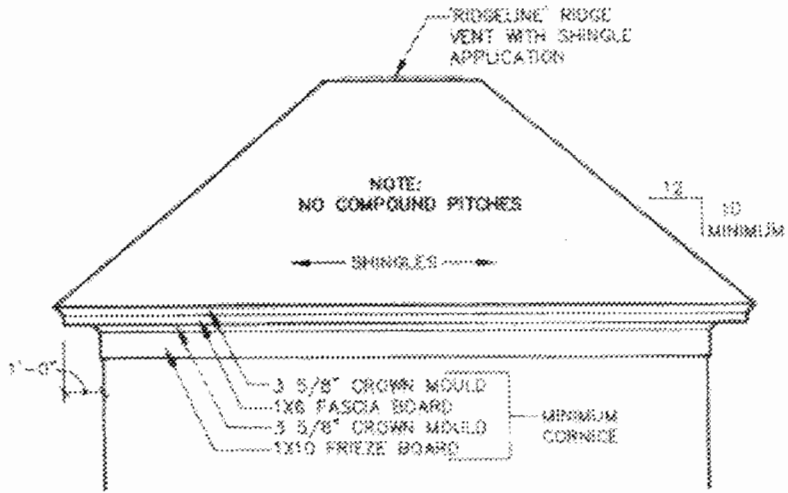
BACK OF CURB

7'-0"  
SIDE YARD

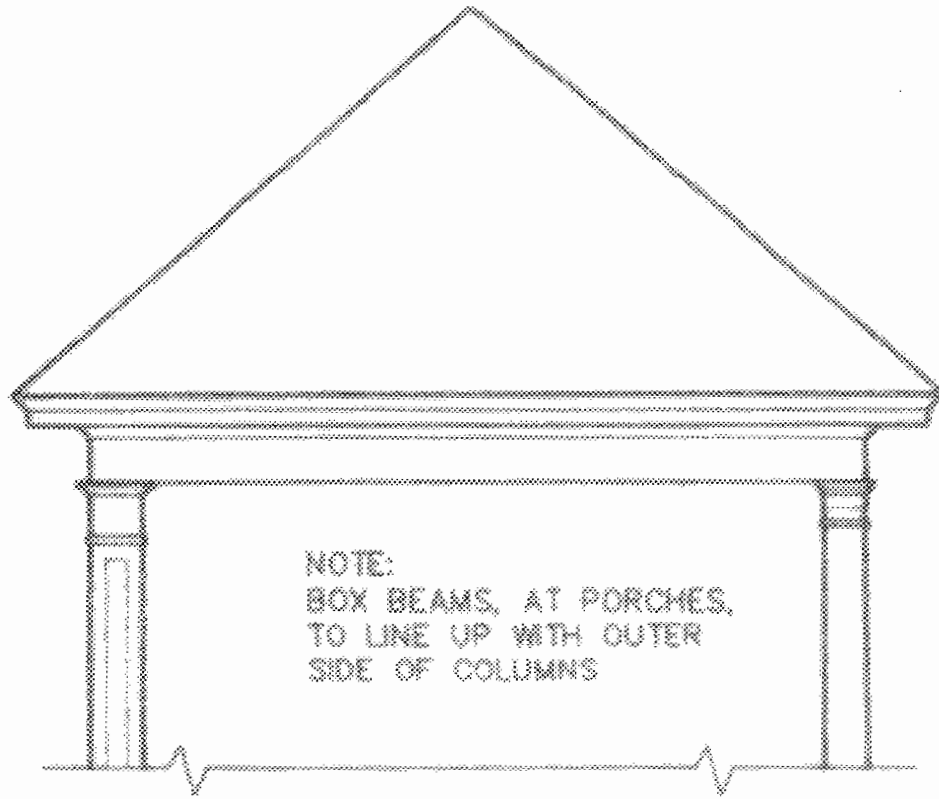
LINE BEARING



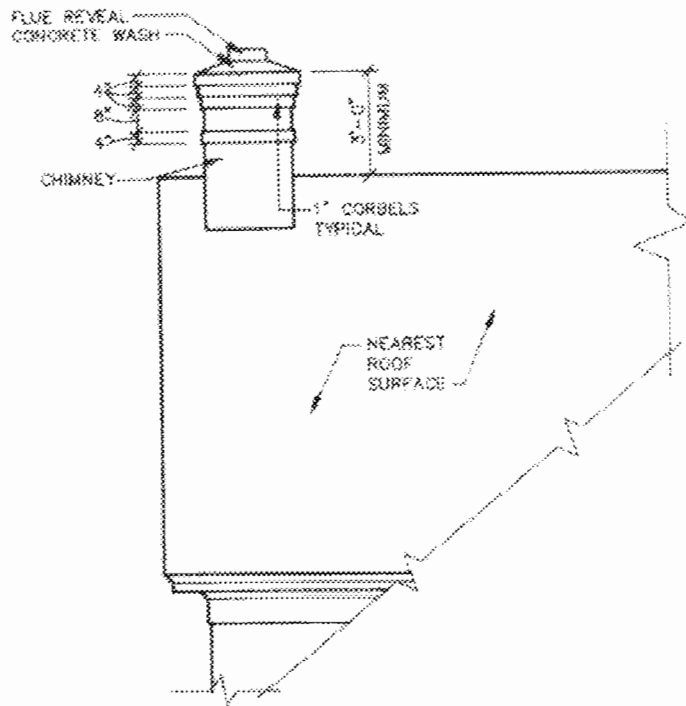
DETAIL AT GABLE ROOF  
(PITCH, CORNICE, OVERHANG, ETC.)



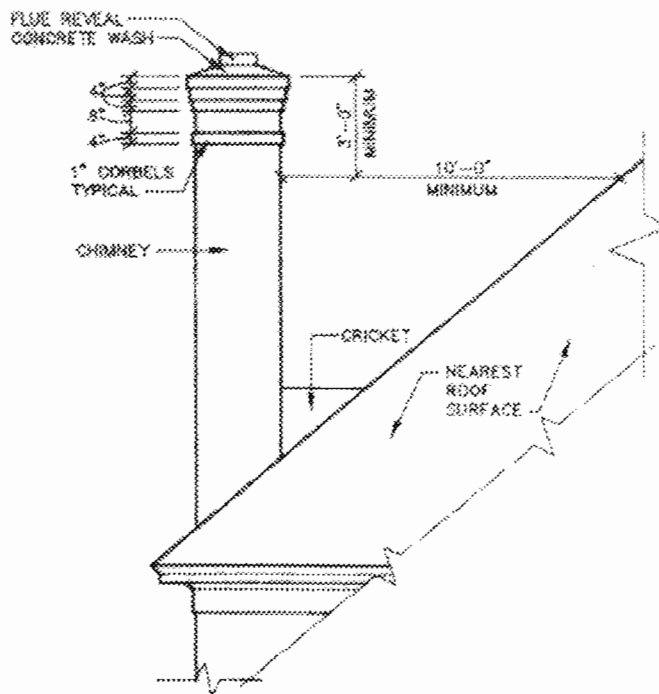
DETAIL AT HIP ROOF  
(PITCH, CORNICE, OVERHANG, ETC.)



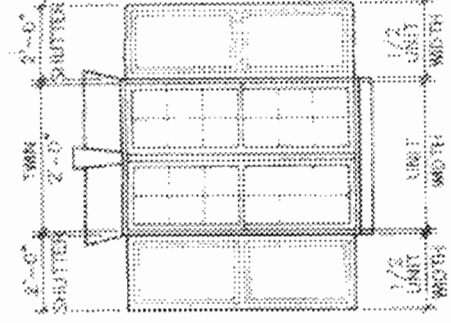
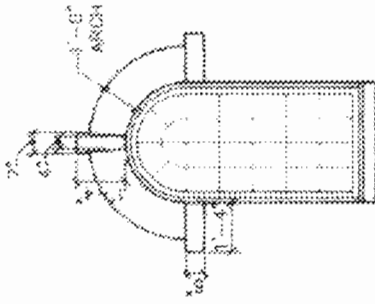
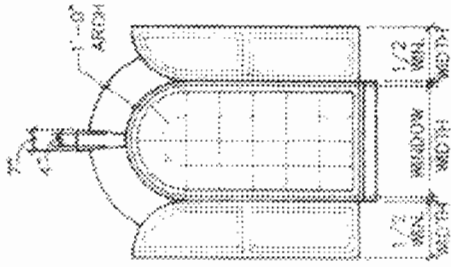
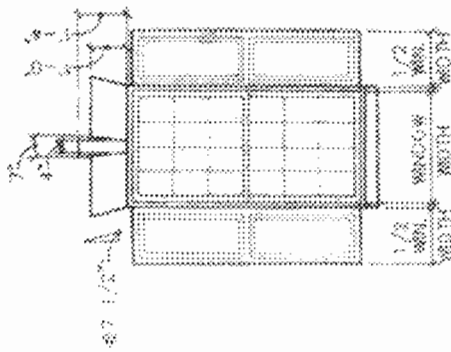
COLUMN DETAIL AT PORCH  
(COLUMN / BEAM RELATIONSHIP)



CHIMNEY DETAIL AT GABLE ROOF



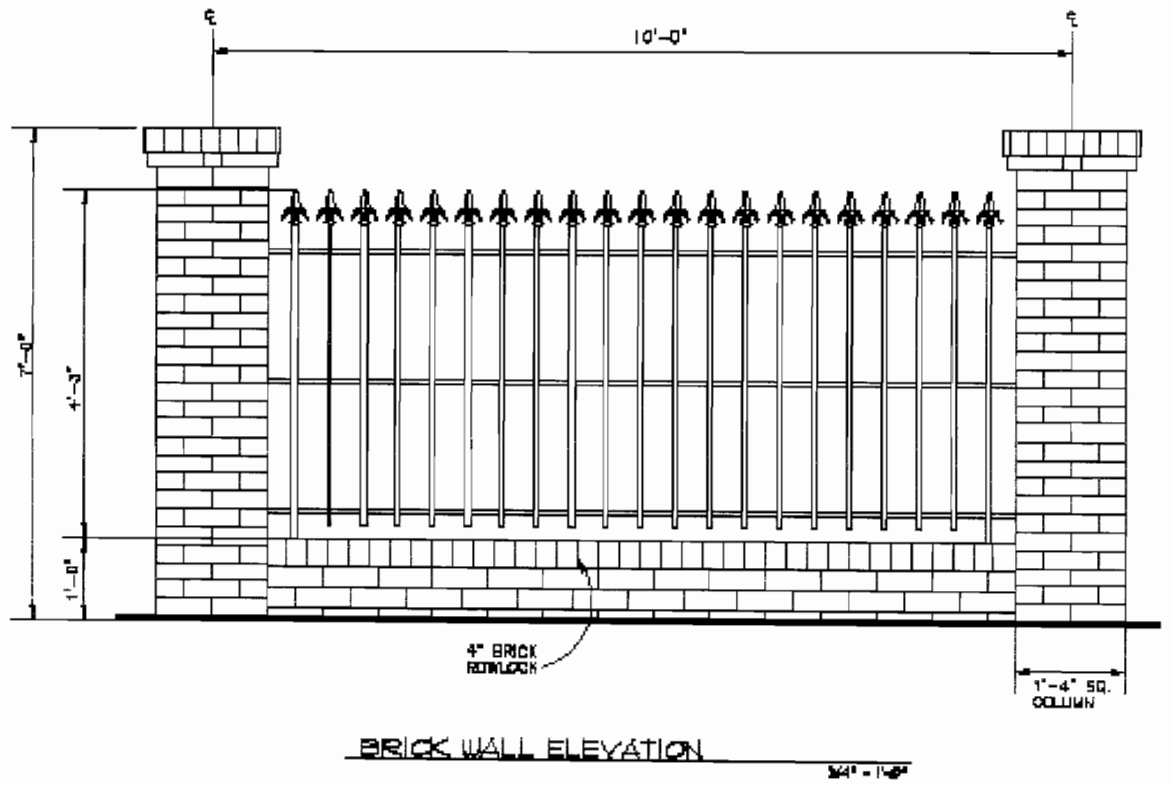
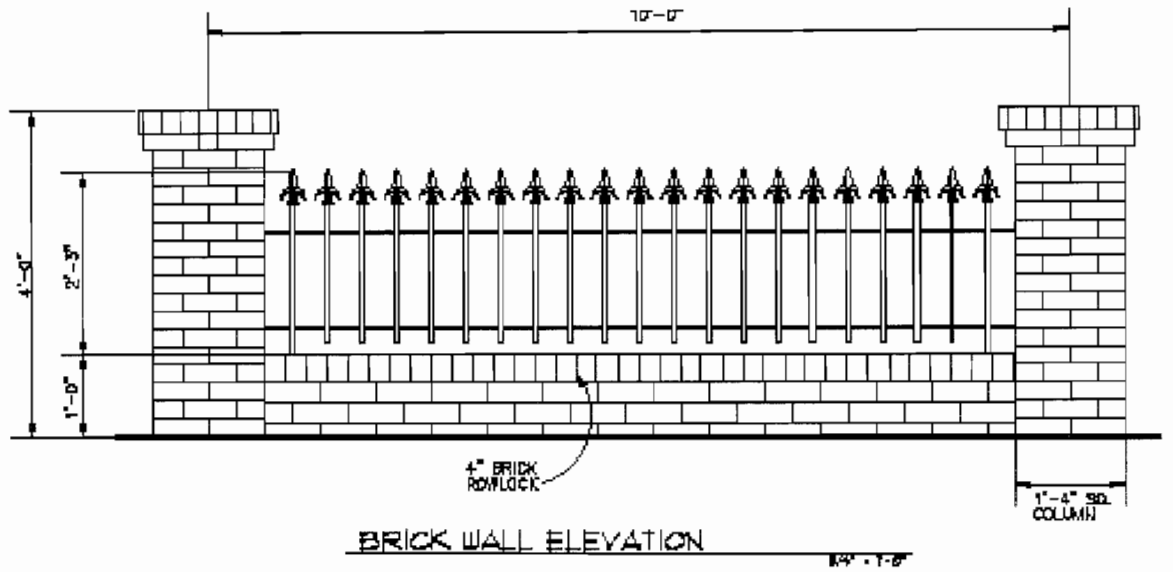
CHIMNEY DETAIL AT HIP ROOF

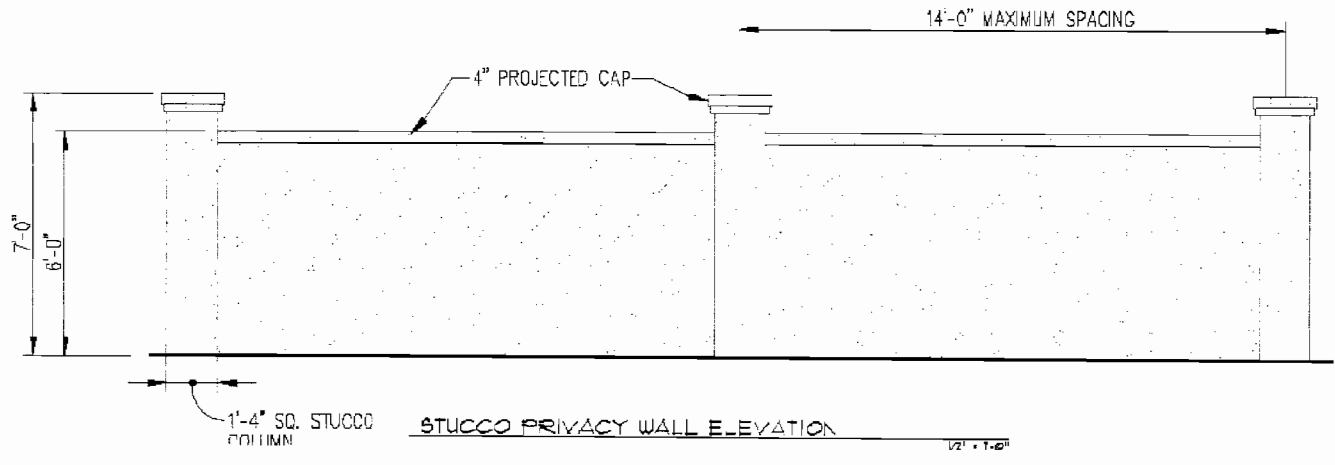
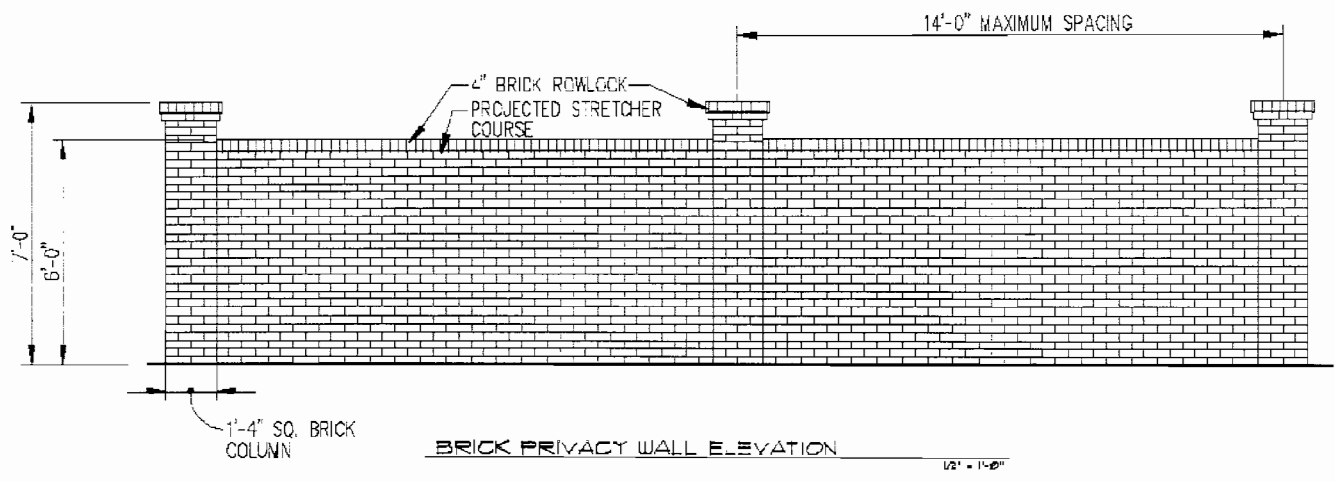
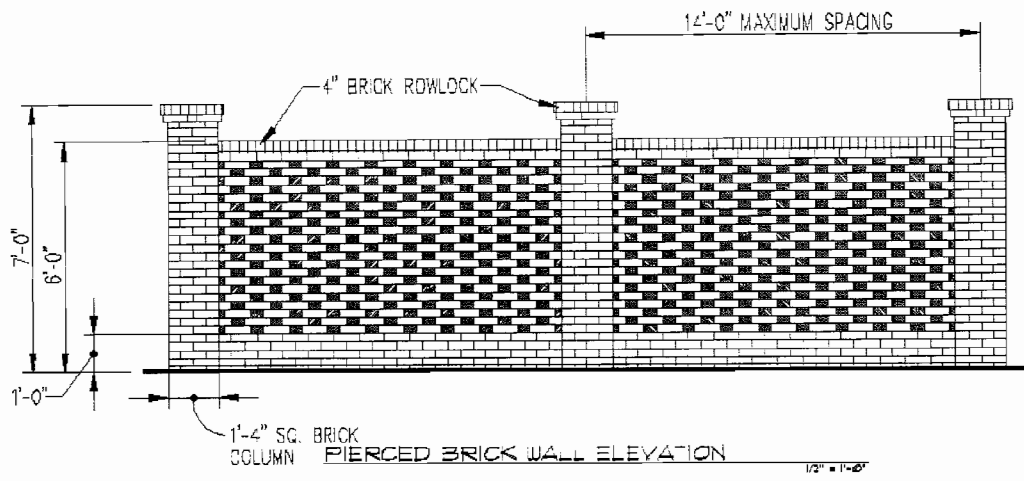


JACKARCH / SHUTTER DETAILS

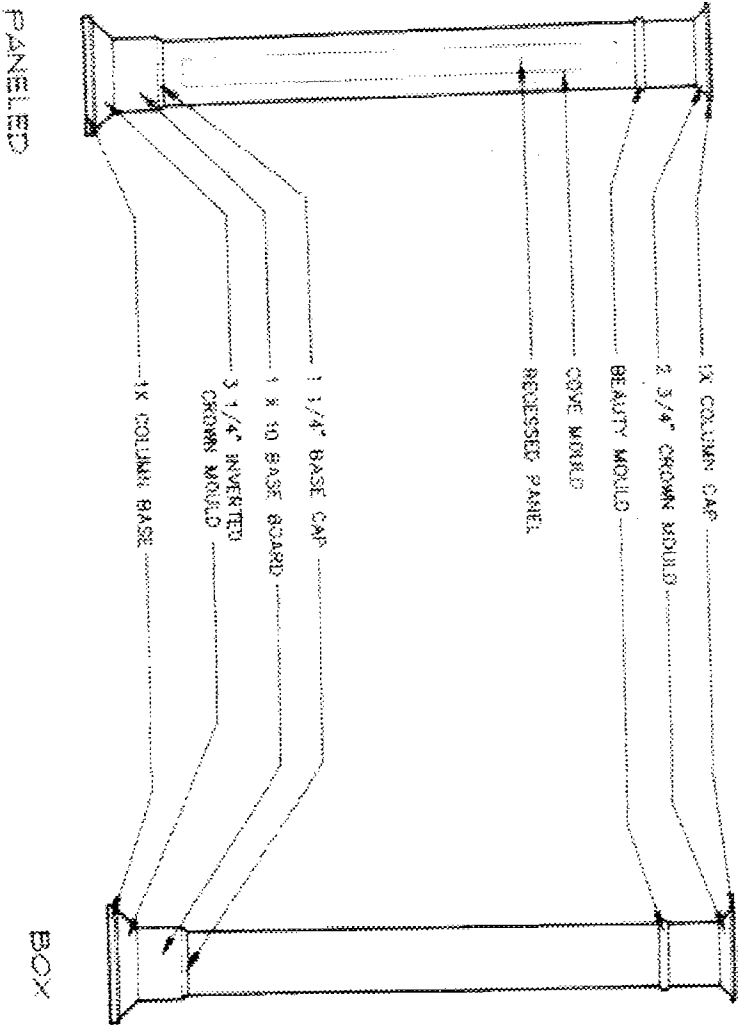
NOTE:

NO SHUTTERS ON TRIPLE WINDOW UNITS





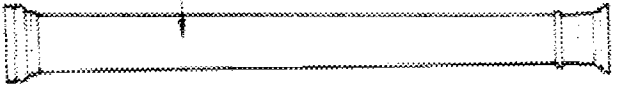




PANELED

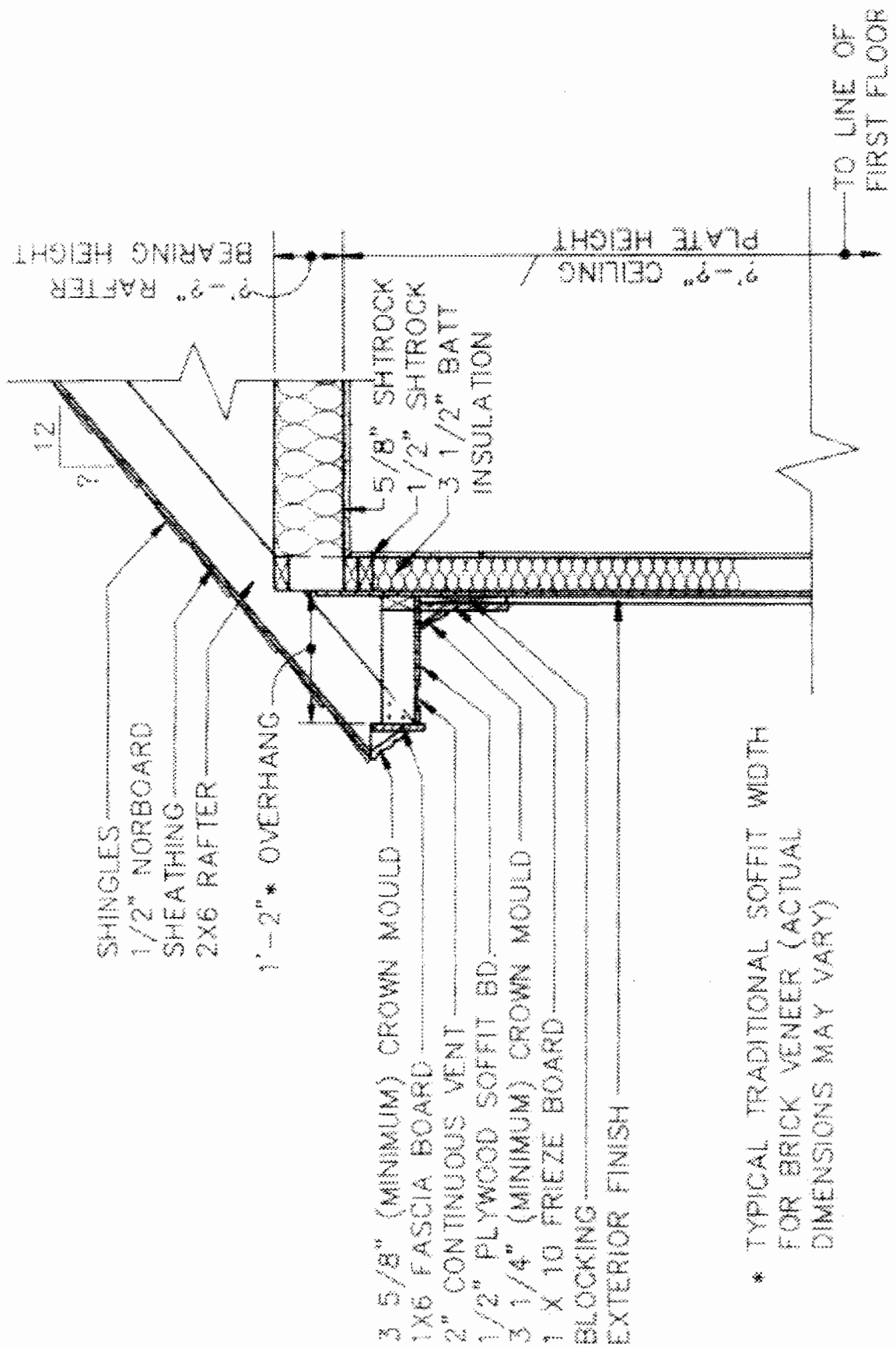
BOX

COLUMN DETAILS



ROUND

10" DIAMETER  
 TREATED WOOD  
 COLUMN WITH  
 CORN CAPITAL  
 AS PER  
 WORTHINGTON  
 GROUP LTD.  
 OR EQUAL



\* TYPICAL TRADITIONAL SOFFIT WIDTH FOR BRICK VENEER (ACTUAL DIMENSIONS MAY VARY)

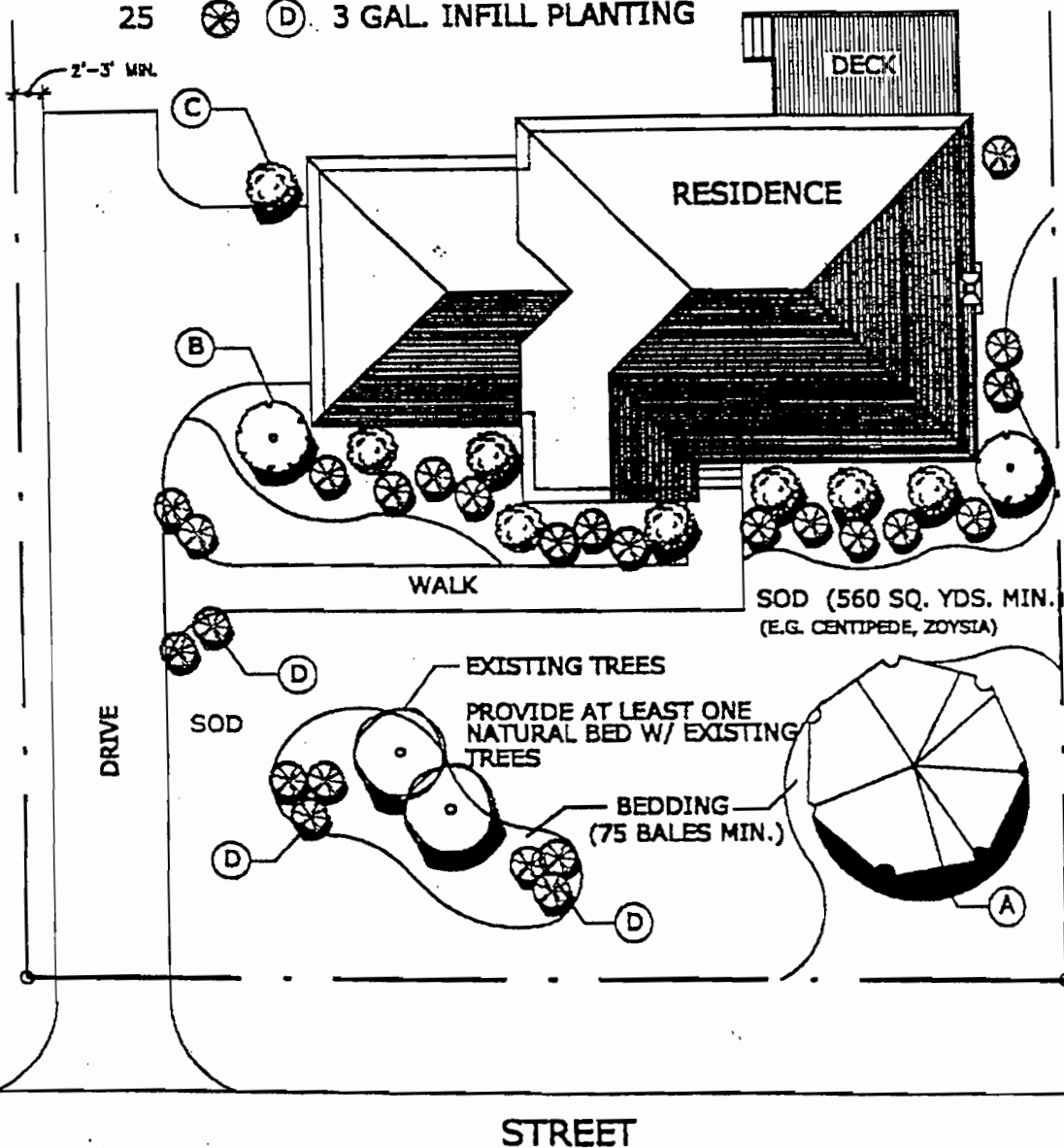


25' NATURAL BUFFER @ REAR  
(HAND CLEAR ONLY)

IRRIGATION SYSTEM  
OF ADEQUATE DESIGN FOR PLAN

NO. REQ'D. PLANT LEGEND

- 1 (A) 25 GAL. TREE (E.G. MAPLE, OAK, MAGNOLIA)
- 2 (B) 15 GAL. KEY PLANTING (E.G. HOLLY)
- 4 (C) 7 GAL. BREAK PLANTING
- 25 (D) 3 GAL. INFILL PLANTING



# SITE PLAN

MIN. LANDSCAPE PLAN (EXAMPLE ONLY) 1' = 10' MIN.

Plan must be submitted to ARB for approval prior to installation